

## Rad21 (S. pombe) antibody

**Cat. No. GTX64147**

<b>Host</b>	Rabbit
<b>Clonality</b>	Polyclonal
<b>Isotype</b>	IgG
<b>Applications</b>	WB
<b>Reactivity</b>	Schizosaccharomyces pombe

**Package**

50 µl

### Applications

#### Application Note

Western blotting (1:1,000-1:4,000 dilution)

<b>Calculated MW</b>	68 kDa. ( <a href="#">Note</a> )
<b>Product Note</b>	Reacts with S. pombe Rad21 protein. Not tested with other species

### Properties

<b>Form</b>	Liquid
<b>Buffer</b>	Serum
<b>Preservative</b>	0.05% Sodium azide
<b>Storage</b>	Store as concentrated solution. Centrifuge briefly prior to opening vial. For short-term storage (1-2 weeks), store at 4°C. For long-term storage, aliquot and store at -20°C or below. Avoid multiple freeze-thaw cycles.
<b>Concentration</b>	Batch dependent (Please refer to the vial label for the specific concentration.)
<b>Immunogen</b>	Recombinant full-size S. pombe Rad21 protein (His-tagged) expressed in E. coli
<b>Conjugation</b>	Unconjugated

#### Note

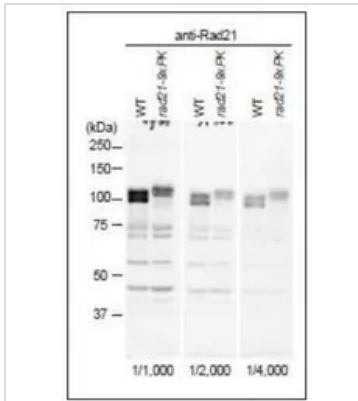
For laboratory research use only. Not for any clinical, therapeutic, or diagnostic use in humans or animals. Not for animal or human consumption.

Purchasers shall not, and agree not to enable third parties to, analyze, copy, reverse engineer or otherwise attempt to determine the structure or sequence of the product.



For full product information, images and publications, please visit our [website](#).

## DATA IMAGES



### GTX64147 WB Image

Identification of Rad21 protein in crude extract of *S. pombe* with anti-Rad21 antiserum. WT cells and rad21-9xPK cells grown in YS5S to 1x10<sup>7</sup>, collected, washed and broken by glass beads. Twenty ug proteins per lane were run on SDS-PAGE. First antibody at indicated dilutions in PBST plus 2.5% skim milk was incubated at 4°C overnight. Second antibody at 1/10,000 of anti-rabbit HRP in PBST was incubated at room temperature for 1 h. Detected by ECL (X-ray film). Rad21 protein migrated at the position of ~110 kDa in SDS-PAGE although the molecular mass is 67.8 kDa. Multiple bands of Rad21 reflect multiple phosphorylation states.



For full product information, images and publications, please visit our [website](https://www.genetex.com).