

Rad22 (S. pombe) antibody

Cat. No. GTX64148

Host	Rabbit
Clonality	Polyclonal
Isotype	IgG
Applications	WB, ICC/IF, IP, ELISA
Reactivity	Schizosaccharomyces pombe

Package
50 µg

Applications

Application Note

Western blotting (1:2,000-1:5,000 dilution)

Calculated MW 52 kDa. ([Note](#))

Properties

Form	Liquid
Buffer	Filter-sterilized PBS, 50% Glycerol
Preservative	No preservatives
Storage	Store as concentrated solution. Centrifuge briefly prior to opening vial. For short-term storage (1-2 weeks), store at 4°C. For long-term storage, aliquot and store at -20°C or below. Avoid multiple freeze-thaw cycles.
Concentration	Batch dependent (Please refer to the vial label for the specific concentration.)
Immunogen	Recombinant full-size Rad22 protein of S. pombe
Purification	Affinity-purified with highly purified Rad22 protein conjugated with agarose beads.
Conjugation	Unconjugated

Note

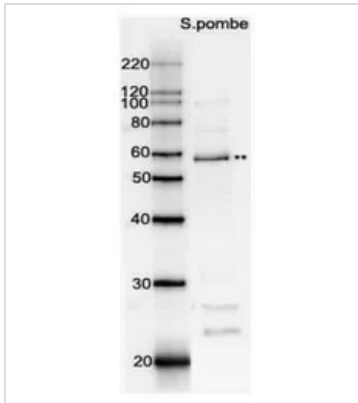
For laboratory research use only. Not for any clinical, therapeutic, or diagnostic use in humans or animals. Not for animal or human consumption.

Purchasers shall not, and agree not to enable third parties to, analyze, copy, reverse engineer or otherwise attempt to determine the structure or sequence of the product.



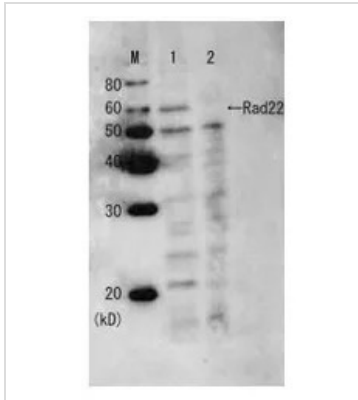
For full product information, images and publications, please visit our [website](#).

DATA IMAGES



GTX64148 WB Image

Western blot analysis of Rad22 in the whole cell extracts with affinity-purified antibody. M: Molecular weight markers (kD) Lane 1:Protein size markers (kDa) Lane 2:Extract of wild-type *S. pombe* indicates Rad22 protein band.



GTX64148 WB Image

Western blot analysis of Rad22 protein in the whole cell extracts with anti-Rad22 serum before affinity purification. M: Molecular weight markers (kD) Lane1: Wild-type strain Lane2: Rad22 deletion mutant strain



For full product information, images and publications, please visit our [website](https://www.genetex.com).