

Rad51 (*S. cerevisiae*) antibody**Cat. No. GTX64149**

Host	Rabbit
Clonality	Polyclonal
Isotype	IgG
Applications	WB, ICC/IF, IP, ChIP assay
Reactivity	Saccharomyces cerevisiae

Package
100 µl

Applications

Application Note

Western blotting (1:1,000-1:10,000 dilution)

Calculated MW 43 kDa. ([Note](#))

Properties

Form	Liquid
Buffer	Serum
Preservative	0.09% Sodium azide
Storage	Store as concentrated solution. Centrifuge briefly prior to opening vial. For short-term storage (1-2 weeks), store at 4°C. For long-term storage, aliquot and store at -20°C or below. Avoid multiple freeze-thaw cycles.
Concentration	Batch dependent (Please refer to the vial label for the specific concentration.)
Immunogen	Recombinant His-tagged Sc Rad51 protein (full-size)
Conjugation	Unconjugated

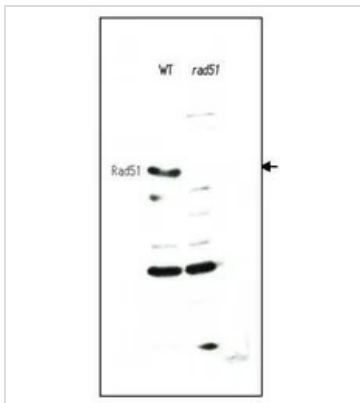
Note

For laboratory research use only. Not for any clinical, therapeutic, or diagnostic use in humans or animals. Not for animal or human consumption.

Purchasers shall not, and agree not to enable third parties to, analyze, copy, reverse engineer or otherwise attempt to determine the structure or sequence of the product.

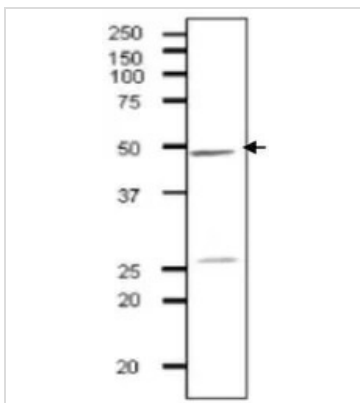
For full product information, images and publications, please visit our [website](#).

DATA IMAGES



GTX64149 WB Image

Western blotting of the crude cell extract of *S. cerevisiae* wild-type strain (left lane) and Rad51 deletion mutant (right lane) The antibody was used at 1/1,000 dilution.



GTX64149 WB Image

Identification of Rad51 protein in crude extract of *S. cerevisiae* strain BY4741. Proteins in the extract were separated on 12.5% SDS-PAGE and transferred to membrane in wet system. The antibody was used at 1/1,000 dilution. As 2nd antibody, HRP conjugated goat anti-rabbit IgG antibody was used at 1/10,000 dilution.



For full product information, images and publications, please visit our [website](https://www.genetex.com).