

Rfa1 / Rpa1 (*S. cerevisiae*) antibody**Cat. No. GTX64151**

<b>Host</b>	Rabbit
<b>Clonality</b>	Polyclonal
<b>Isotype</b>	IgG
<b>Applications</b>	WB, IP
<b>Reactivity</b>	Saccharomyces cerevisiae

**Package**  
100 µl

## Applications

**Application Note**

Western blotting (1:2,000 dilution), Immunoprecipitation (1:200)

**Calculated MW** 70 kDa. ([Note](#))

## Properties

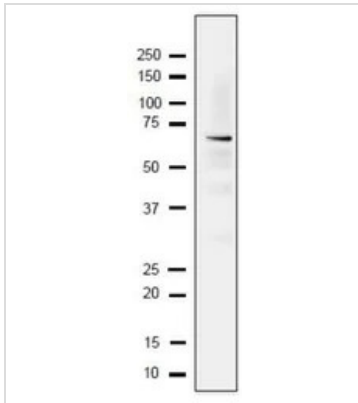
**Form** Liquid**Buffer** Serum**Preservative** 0.05% Sodium azide**Storage** Store as concentrated solution. Centrifuge briefly prior to opening vial. For short-term storage (1-2 weeks), store at 4°C. For long-term storage, aliquot and store at -20°C or below. Avoid multiple freeze-thaw cycles.**Concentration** Batch dependent (Please refer to the vial label for the specific concentration.)**Immunogen** Recombinant Rfa1 protein**Conjugation** Unconjugated**Note**

For laboratory research use only. Not for any clinical, therapeutic, or diagnostic use in humans or animals. Not for animal or human consumption.

Purchasers shall not, and agree not to enable third parties to, analyze, copy, reverse engineer or otherwise attempt to determine the structure or sequence of the product.

For full product information, images and publications, please visit our [website](#).

## DATA IMAGES

**GTX64151 WB Image**

Detection of endogenous Rfa1 protein in whole cell extract of *S.cerevisiae*. The extract of strain BY4741 (10 µg) was separated on SDS-PAGE 10-20% gradient gel. The anti-Rfa1 antibody was used at 1/2,000 dilution. As the second antibody, HRP-conjugated goat anti-rabbit IgG was used at 1/10,000 dilution



For full product information, images and publications, please visit our [website](#).