

Rnq1 (S. cerevisiae) antibody

Cat. No. GTX64154

Host	Rabbit
Clonality	Polyclonal
Isotype	IgG
Applications	WB
Reactivity	Saccharomyces cerevisiae

Package
100 µg

Applications

Application Note

Western blotting (300 fold dilution)

Calculated MW 43 kDa. ([Note](#))

Properties

Form	Liquid
Buffer	PBS, 0.1% BSA, 50% Glycerol
Preservative	0.09% Sodium azide
Storage	Store as concentrated solution. Centrifuge briefly prior to opening vial. For short-term storage (1-2 weeks), store at 4°C. For long-term storage, aliquot and store at -20°C or below. Avoid multiple freeze-thaw cycles.
Concentration	Batch dependent (Please refer to the vial label for the specific concentration.)
Immunogen	Synthetic peptide CSQQNNNGNQRY corresponding to the C-terminus region of Rnq1
Conjugation	Unconjugated

Note

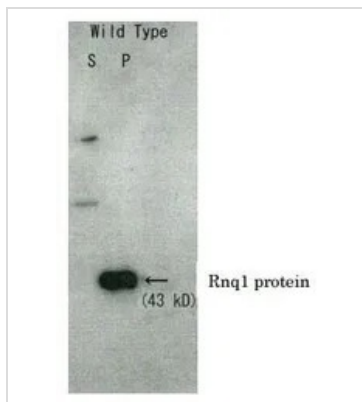
For laboratory research use only. Not for any clinical, therapeutic, or diagnostic use in humans or animals. Not for animal or human consumption.

Purchasers shall not, and agree not to enable third parties to, analyze, copy, reverse engineer or otherwise attempt to determine the structure or sequence of the product.



For full product information, images and publications, please visit our [website](#).

DATA IMAGES



GTX64154 WB Image

Detection of Rnq1 protein in *S. cerevisiae* by Western blotting with this antibody. Cells were harvested after 24 h of galactose induction. Extracts were centrifuged and soluble (S) and pelleted (P) fractions were assayed by Western blotting using this antibody. Rnq1 protein was detected in pelleted fraction.



For full product information, images and publications, please visit our [website](https://www.genetex.com).