

RPC19 (*S. cerevisiae*) antibody

Cat. No. GTX64155

Host	Rabbit
Clonality	Polyclonal
Isotype	IgG
Applications	WB, ELISA
Reactivity	Saccharomyces cerevisiae

Package
100 µl

Applications

Application Note

Western blotting (1:1,000 dilution)

Calculated MW 16 kDa. ([Note](#))

Properties

Form	Liquid
Buffer	Serum
Preservative	0.09% Sodium azide
Storage	Store as concentrated solution. Centrifuge briefly prior to opening vial. For short-term storage (1-2 weeks), store at 4°C. For long-term storage, aliquot and store at -20°C or below. Avoid multiple freeze-thaw cycles.
Concentration	Batch dependent (Please refer to the vial label for the specific concentration.)
Immunogen	Recombinant GST-RPC19 fusion protein
Conjugation	Unconjugated

Note

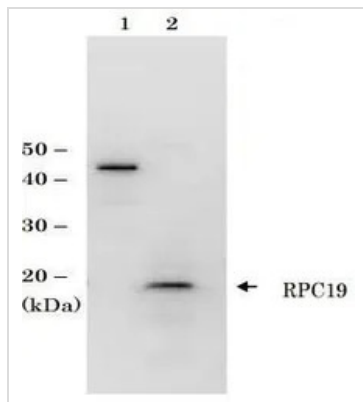
For laboratory research use only. Not for any clinical, therapeutic, or diagnostic use in humans or animals. Not for animal or human consumption.

Purchasers shall not, and agree not to enable third parties to, analyze, copy, reverse engineer or otherwise attempt to determine the structure or sequence of the product.



For full product information, images and publications, please visit our [website](#).

DATA IMAGES



GTX64155 WB Image

Identification of RPC19 protein in crude extract of *S. cerevisiae* by western blotting with anti-scRPC antibody. Sample in lane 1 is recombinant GST-RPC19 protein (10 ng) and sample in lane 2 is crude extract of *S. cerevisiae* strain BY4741 (50 µg). The antibody was used at 1/1,000 dilution.



For full product information, images and publications, please visit our [website](https://www.genetex.com).