

Ribophorin I (*S. cerevisiae*) antibody

Cat. No. GTX64156

Host	Rabbit
Clonality	Polyclonal
Isotype	IgG
Applications	WB
Reactivity	Saccharomyces cerevisiae

Package
100 µl

Applications

Application Note

Western blotting (1,000-2,000 fold dilution)

Calculated MW 109 kDa. ([Note](#))

Properties

Form	Liquid
Buffer	Serum
Preservative	0.1% Sodium azide
Storage	Store as concentrated solution. Centrifuge briefly prior to opening vial. For short-term storage (1-2 weeks), store at 4°C. For long-term storage, aliquot and store at -20°C or below. Avoid multiple freeze-thaw cycles.
Concentration	Batch dependent (Please refer to the vial label for the specific concentration.)
Immunogen	Synthetic peptide corresponding to a C-terminal region of Rpn (849~860).
Conjugation	Unconjugated

Note

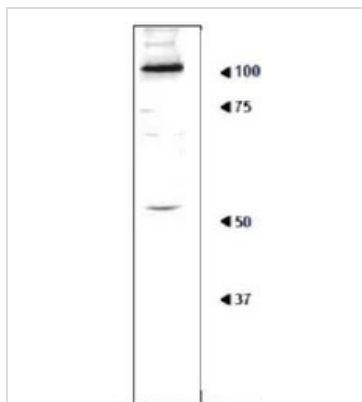
For laboratory research use only. Not for any clinical, therapeutic, or diagnostic use in humans or animals. Not for animal or human consumption.

Purchasers shall not, and agree not to enable third parties to, analyze, copy, reverse engineer or otherwise attempt to determine the structure or sequence of the product.



For full product information, images and publications, please visit our [website](#).

DATA IMAGES



GTX64156 WB Image

Detection of Rpn1 in the crude extract of *S. cerevisiae* by Western blotting using this antibody. Crude cell extract of *S. cerevisiae* (20 ug) was analysed by western blotting using anti-Rpn1 antibody at 1/1,000 dilution. Blotting should be done in wet system. Molecular mass of Rpn1 is 109 kDa



For full product information, images and publications, please visit our [website](#).