

Thrombospondin 1 antibody [HL3593]

Cat. No. GTX641564

Host	Rabbit
Clonality	Monoclonal
Isotype	IgG
Applications	WB
Reactivity	Human, Mouse, Rat

Package
100 µl, 25 µl

Applications

Application Note

*Optimal dilutions/concentrations should be determined by the researcher.

Suggested dilution	Recommended dilution
WB	1:500-1:3000

Not tested in other applications.

Observed MW (kDa) 175-195 kDa.

Properties

Form	Liquid
Buffer	PBS
Preservative	No preservative
Storage	Store as concentrated solution. Centrifuge briefly prior to opening vial. For short-term storage (1-2 weeks), store at 4°C. For long-term storage, aliquot and store at -20°C or below. Avoid multiple freeze-thaw cycles.
Concentration	1 mg/ml (Please refer to the vial label for the specific concentration.)
Immunogen	Recombinant fragment of human Thrombospondin 1.
Purification	Affinity purified by Protein A.
Conjugation	Unconjugated

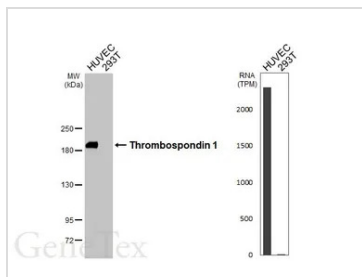
Note

For laboratory research use only. Not for any clinical, therapeutic, or diagnostic use in humans or animals. Not for animal or human consumption.

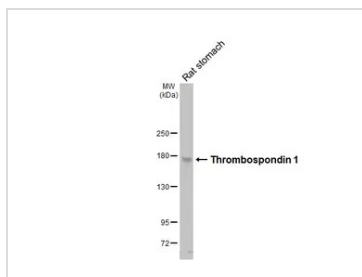
Purchasers shall not, and agree not to enable third parties to, analyze, copy, reverse engineer or otherwise attempt to determine the structure or sequence of the product.



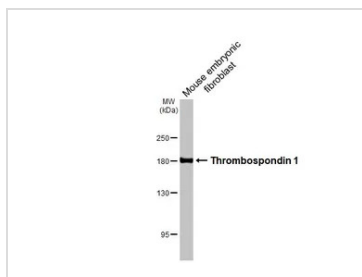
For full product information, images and publications, please visit our [website](#).

DATA IMAGES

GTX641564 WB Image

Various whole cell extracts (30 μ g) were separated by 5% SDS-PAGE, and the membrane was blotted with Thrombospondin 1 antibody [HL3593] (GTX641564) diluted at 1:1000. The HRP-conjugated anti-rabbit IgG antibody (GTX213110-01) was used to detect the primary antibody. Corresponding RNA expression data for the same cell lines are based on Human Protein Atlas program.


GTX641564 WB Image

Rat tissue extract (50 μ g) was separated by 5% SDS-PAGE, and the membrane was blotted with Thrombospondin 1 antibody [HL3593] (GTX641564) diluted at 1:1000. The HRP-conjugated anti-rabbit IgG antibody (GTX213110-01) was used to detect the primary antibody, and the signal was developed with Trident ECL plus-Enhanced.


GTX641564 WB Image

Whole cell extract (30 μ g) was separated by 5% SDS-PAGE, and the membrane was blotted with Thrombospondin 1 antibody [HL3593] (GTX641564) diluted at 1:1000. The HRP-conjugated anti-rabbit IgG antibody (GTX213110-01) was used to detect the primary antibody.



For full product information, images and publications, please visit our [website](https://www.genetex.com).