

GPRC5C antibody [HL3595]

Cat. No. GTX641566

Host	Rabbit
Clonality	Monoclonal
Isotype	IgG
Applications	IHC-P, IHC-Fr
Reactivity	Human, Mouse

Package
100 µl, 25 µl

Applications

Application Note

*Optimal dilutions/concentrations should be determined by the researcher.

Suggested dilution	Recommended dilution
IHC-P	1:100-1:1000
IHC-Fr	Assay dependent

Not tested in other applications.

Product Note This antibody was raised against human GPRC5C Intracellular domain.

Properties

Form	Liquid
Buffer	PBS
Preservative	No preservative
Storage	Store as concentrated solution. Centrifuge briefly prior to opening vial. For short-term storage (1-2 weeks), store at 4°C. For long-term storage, aliquot and store at -20°C or below. Avoid multiple freeze-thaw cycles.
Concentration	1 mg/ml (Please refer to the vial label for the specific concentration.)
Immunogen	Synthetic peptide encompassing a sequence within the Intracellular domain of human GPRC5C. The exact sequence is proprietary.
Purification	Affinity purified by Protein A.
Conjugation	Unconjugated

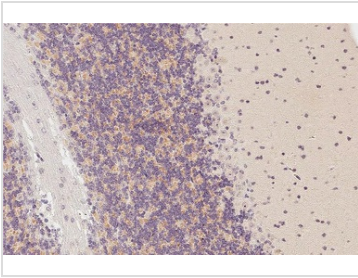
Note

For laboratory research use only. Not for any clinical, therapeutic, or diagnostic use in humans or animals. Not for animal or human consumption.

Purchasers shall not, and agree not to enable third parties to, analyze, copy, reverse engineer or otherwise attempt to determine the structure or sequence of the product.



For full product information, images and publications, please visit our [website](#).

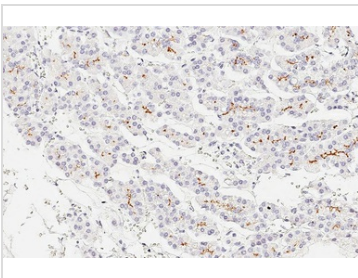
DATA IMAGES

GTX641566 IHC-P Image

GPRC5C antibody [HL3595] detects GPRC5C protein by immunohistochemical analysis.

Sample: Paraffin-embedded mouse cerebellum.

GPRC5C stained by GPRC5C antibody [HL3595] (GTX641566) diluted at 1:200.

Antigen Retrieval: Tris-EDTA buffer, pH 9.0, 15 min

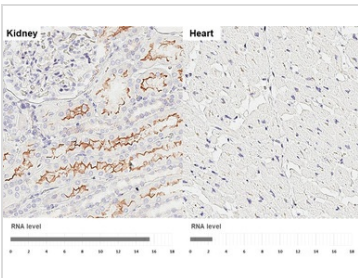

GTX641566 IHC-P Image

GPRC5C antibody [HL3595] detects GPRC5C protein by immunohistochemical analysis.

Sample: Paraffin-embedded human pancreas.

GPRC5C stained by GPRC5C antibody [HL3595] (GTX641566) diluted at 1:200.

Antigen Retrieval: Tris-EDTA buffer, pH 9.0, 15 min


GTX641566 IHC-P Image

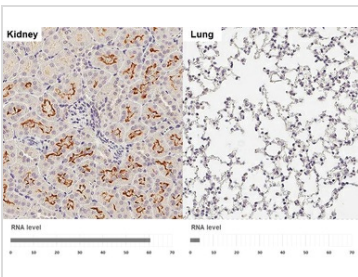
GPRC5C antibody [HL3595] detects GPRC5C protein by immunohistochemical analysis.

Sample: Paraffin-embedded human tissues.

GPRC5C stained by GPRC5C antibody [HL3595] (GTX641566) diluted at 1:200.

Antigen Retrieval: Tris-EDTA buffer, pH 9.0, 15 min

Corresponding RNA levels (RPKM) in the tissues are based on NCBI database.


GTX641566 IHC-P Image

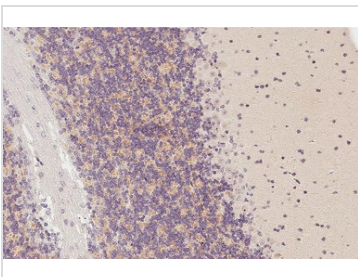
GPRC5C antibody [HL3595] detects GPRC5C protein by immunohistochemical analysis.

Sample: Paraffin-embedded mouse tissues.

GPRC5C stained by GPRC5C antibody [HL3595] (GTX641566) diluted at 1:200.

Antigen Retrieval: Tris-EDTA buffer, pH 9.0, 15 min

Corresponding RNA levels (RPKM) in the tissues are based on NCBI database.


GTX641566 IHC-P Image

GPRC5C antibody [HL3595] detects GPRC5C protein by immunohistochemical analysis.

Sample: Paraffin-embedded mouse cerebellum.

GPRC5C stained by GPRC5C antibody [HL3595] (GTX641566) diluted at 1:200.

Antigen Retrieval: Tris-EDTA buffer, pH 9.0, 15 min



For full product information, images and publications, please visit our [website](https://www.genetex.com).