

RuvA antibody

Cat. No. GTX64162

Host	Rabbit
Clonality	Polyclonal
Isotype	IgG
Applications	WB, ELISA
Reactivity	E. coli

Package
100 µl

Applications

Application Note

Western blotting (3,000 dilution)

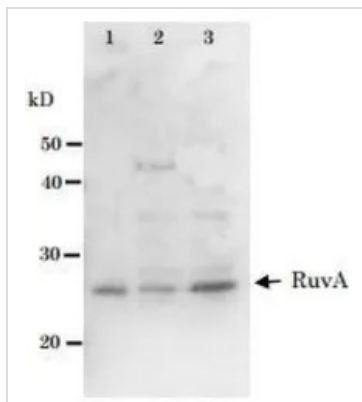
Properties

Form	Liquid
Buffer	Serum
Preservative	0.05% Sodium azide
Storage	Store as concentrated solution. Centrifuge briefly prior to opening vial. For short-term storage (1-2 weeks), store at 4°C. For long-term storage, aliquot and store at -20°C or below. Avoid multiple freeze-thaw cycles.
Concentration	Batch dependent (Please refer to the vial label for the specific concentration.)
Immunogen	Purified full-size recombinant RuvA protein
Conjugation	Unconjugated
Note	<p>For laboratory research use only. Not for any clinical, therapeutic, or diagnostic use in humans or animals. Not for animal or human consumption.</p> <p>Purchasers shall not, and agree not to enable third parties to, analyze, copy, reverse engineer or otherwise attempt to determine the structure or sequence of the product.</p>



For full product information, images and publications, please visit our [website](#).

DATA IMAGES



GTX64162 WB Image

Detection of RuvA (22kD) protein by Western blotting using this antibody lane1: RuvA protein 0.8ng lane2: E. coli AB1157 crude extract lane3: E. coli AB1157 *lexA* mutant crude extract Expression of RuvA is enhanced by *lexA* mutation.



For full product information, images and publications, please visit our [website](https://www.genetex.com).