

CDK1 / CDC2 (phospho Thr161) + CDK2 (phospho Thr160) + CDK3 (phospho Thr160) antibody [HL3648]

Cat. No. GTX641639

Host	Rabbit
Clonality	Monoclonal
Isotype	IgG
Applications	WB
Reactivity	Human

Package
100 µl, 25 µl

Applications

Application Note

*Optimal dilutions/concentrations should be determined by the researcher.

Suggested dilution	Recommended dilution
--------------------	----------------------

WB	1:500-1:3000
----	--------------

Not tested in other applications.

Observed MW (kDa)	34 kDa.
--------------------------	---------

Properties

Form	Liquid
-------------	--------

Buffer	PBS
---------------	-----

Preservative	No preservatives
---------------------	------------------

Storage	Store as concentrated solution. Centrifuge briefly prior to opening vial. For short-term storage (1-2 weeks), store at 4°C. For long-term storage, aliquot and store at -20°C or below. Avoid multiple freeze-thaw cycles.
----------------	--

Immunogen	Carrier-protein conjugated synthetic peptide surrounding phospho Thr160 of human CDK2. The exact sequence is proprietary.
------------------	---

Purification	Affinity purified by Protein A.
---------------------	---------------------------------

Conjugation	Unconjugated
--------------------	--------------

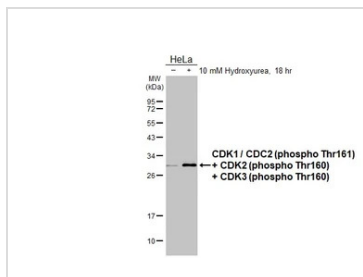
Note	For laboratory research use only. Not for any clinical, therapeutic, or diagnostic use in humans or animals. Not for animal or human consumption.
-------------	---

Note	Purchasers shall not, and agree not to enable third parties to, analyze, copy, reverse engineer or otherwise attempt to determine the structure or sequence of the product.
-------------	---



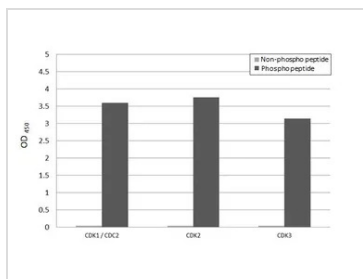
For full product information, images and publications, please visit our [website](#).

DATA IMAGES



GTX641639 WB Image

Untreated (-) and treated (+) HeLa whole cell extracts (30 µg) were separated by 12% SDS-PAGE, and the membrane was blotted with CDK1 / CDC2 (phospho Thr161) + CDK2 (phospho Thr160) + CDK3 (phospho Thr160) antibody [HL3648] (GTX641639) diluted at 1:1000. The HRP-conjugated anti-rabbit IgG antibody (GTX213110-01) was used to detect the primary antibody.



GTX641639 Image

Specificity test was performed by coating the plate with recombinant CDK1 / CDC2 non-phospho peptide, and CDK1 / CDC2 (phospho Thr161) peptide, CDK2 non-phospho peptide, CDK2 (phospho Thr160) peptide, CDK3 non-phospho peptide, and CDK3 (phospho Thr160) peptide (15.63 ng/mL). Coated protein was probed with CDK1 / CDC2 (phospho Thr161) + CDK2 (phospho Thr160) + CDK3 (phospho Thr160) antibody [HL3648] (GTX641639) (1 µg/mL). Goat anti-rabbit IgG antibody (HRP) (GTX213110-01) (1:10000) was used to detect the bound primary antibody.



For full product information, images and publications, please visit our [website](#).