

CDK1 / CDC2 (phospho Thr161) + CDK2 (phospho Thr160) + CDK3 (phospho Thr160) antibody [HL3648]

Cat. No. GTX641639

| | |
|---------------------|------------|
| Host | Rabbit |
| Clonality | Monoclonal |
| Isotype | IgG |
| Applications | WB |
| Reactivity | Human |

Package
100 µl, 25 µl

Applications

Application Note

*Optimal dilutions/concentrations should be determined by the researcher.

| Suggested dilution | Recommended dilution |
|--------------------|----------------------|
|--------------------|----------------------|

| | |
|----|--------------|
| WB | 1:500-1:3000 |
|----|--------------|

Not tested in other applications.

| | |
|--------------------------|---------|
| Observed MW (kDa) | 34 kDa. |
|--------------------------|---------|

Properties

| | |
|-------------|--------|
| Form | Liquid |
|-------------|--------|

| | |
|---------------|-----|
| Buffer | PBS |
|---------------|-----|

| | |
|---------------------|------------------|
| Preservative | No preservatives |
|---------------------|------------------|

| | |
|----------------|--|
| Storage | Store as concentrated solution. Centrifuge briefly prior to opening vial. For short-term storage (1-2 weeks), store at 4°C. For long-term storage, aliquot and store at -20°C or below. Avoid multiple freeze-thaw cycles. |
|----------------|--|

| | |
|------------------|---|
| Immunogen | Carrier-protein conjugated synthetic peptide surrounding phospho Thr160 of human CDK2. The exact sequence is proprietary. |
|------------------|---|

| | |
|---------------------|---------------------------------|
| Purification | Affinity purified by Protein A. |
|---------------------|---------------------------------|

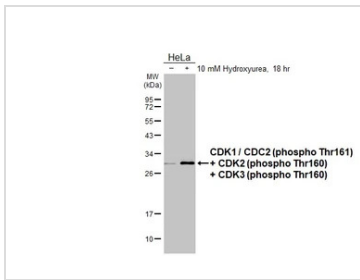
| | |
|--------------------|--------------|
| Conjugation | Unconjugated |
|--------------------|--------------|

| | |
|-------------|---|
| Note | For laboratory research use only. Not for any clinical, therapeutic, or diagnostic use in humans or animals. Not for animal or human consumption. |
|-------------|---|

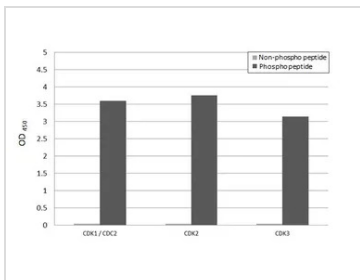
| | |
|-------------|---|
| Note | Purchasers shall not, and agree not to enable third parties to, analyze, copy, reverse engineer or otherwise attempt to determine the structure or sequence of the product. |
|-------------|---|



For full product information, images and publications, please visit our [website](#).

DATA IMAGES

GTX641639 WB Image

Untreated (-) and treated (+) HeLa whole cell extracts (30 µg) were separated by 12% SDS-PAGE, and the membrane was blotted with CDK1 / CDC2 (phospho Thr161) + CDK2 (phospho Thr160) + CDK3 (phospho Thr160) antibody [HL3648] (GTX641639) diluted at 1:1000. The HRP-conjugated anti-rabbit IgG antibody (GTX213110-01) was used to detect the primary antibody.


GTX641639 Image

Specificity test was performed by coating the plate with recombinant CDK1 / CDC2 non-phospho peptide, and CDK1 / CDC2 (phospho Thr161) peptide, CDK2 non-phospho peptide, CDK2 (phospho Thr160) peptide, CDK3 non-phospho peptide, and CDK3 (phospho Thr160) peptide (15.63 ng/mL). Coated protein was probed with CDK1 / CDC2 (phospho Thr161) + CDK2 (phospho Thr160) + CDK3 (phospho Thr160) antibody [HL3648] (GTX641639) (1 µg/mL). Goat anti-rabbit IgG antibody (HRP) (GTX213110-01) (1:10000) was used to detect the bound primary antibody.



For full product information, images and publications, please visit our [website](#).