

RuvC antibody

Cat. No. GTX64164

Host	Rabbit
Clonality	Polyclonal
Isotype	IgG
Applications	WB
Reactivity	E. coli

Package
100 µl

Applications

Application Note

Western blotting (3,000 dilution)

Properties

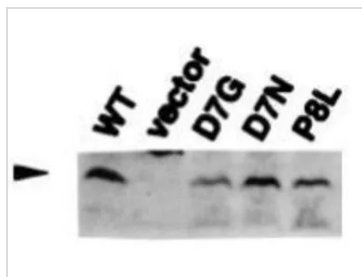
Form	Liquid
Buffer	Serum
Preservative	0.05% Sodium azide
Storage	Store as concentrated solution. Centrifuge briefly prior to opening vial. For short-term storage (1-2 weeks), store at 4°C. For long-term storage, aliquot and store at -20°C or below. Avoid multiple freeze-thaw cycles.
Concentration	Batch dependent (Please refer to the vial label for the specific concentration.)
Immunogen	Purified full-size recombinant RuvC protein
Conjugation	Unconjugated

Note

For laboratory research use only. Not for any clinical, therapeutic, or diagnostic use in humans or animals. Not for animal or human consumption.

Purchasers shall not, and agree not to enable third parties to, analyze, copy, reverse engineer or otherwise attempt to determine the structure or sequence of the product.

DATA IMAGES

**GTX64164 WB Image**

Detection of RuvC (19kD) proteins in the cell extracts of E. coli carrying the plasmids which encode the indicated mutant RuvC proteins by Western blotting using this antibody. WT: wild type RuvC protein vector; vector plasmid D7G, D7N, P8L: mutant RuvC proteins

For full product information, images and publications, please visit our [website](#).