

## CaMKII (phospho Thr286) antibody [HL3662]

**Cat. No. GTX641653**

<b>Host</b>	Rabbit
<b>Clonality</b>	Monoclonal
<b>Isotype</b>	IgG
<b>Applications</b>	WB
<b>Reactivity</b>	Human

**Package**  
100 µl, 25 µl

## Applications

**Application Note**

\*Optimal dilutions/concentrations should be determined by the researcher.

Suggested dilution	Recommended dilution
WB	1:500-1:3000

Not tested in other applications.

**Observed MW (kDa)** 53-58 kDa.

## Properties

<b>Form</b>	Liquid
<b>Buffer</b>	PBS
<b>Preservative</b>	No preservatives
<b>Storage</b>	Store as concentrated solution. Centrifuge briefly prior to opening vial. For short-term storage (1-2 weeks), store at 4°C. For long-term storage, aliquot and store at -20°C or below. Avoid multiple freeze-thaw cycles.
<b>Concentration</b>	1 mg/ml (Please refer to the vial label for the specific concentration.)
<b>Immunogen</b>	Carrier-protein conjugated synthetic peptide surrounding phospho Thr286 of human CaMKII. The exact sequence is proprietary.
<b>Purification</b>	Affinity purified by Protein A.
<b>Conjugation</b>	Unconjugated

**Note**

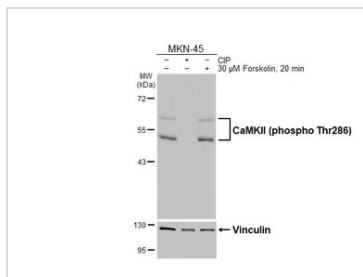
For laboratory research use only. Not for any clinical, therapeutic, or diagnostic use in humans or animals. Not for animal or human consumption.

Purchasers shall not, and agree not to enable third parties to, analyze, copy, reverse engineer or otherwise attempt to determine the structure or sequence of the product.



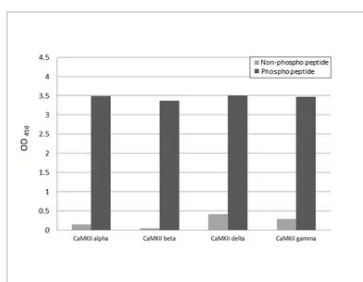
For full product information, images and publications, please visit our [website](#).

DATA IMAGES



**GTX641653 WB Image**

Untreated (-) and treated (+) MKN-45 whole cell extracts (30 µg) were separated by 7.5% SDS-PAGE, and the membrane was blotted with CaMKII (phospho Thr286) antibody [HL3662] (GTX641653) diluted at 1:1000. The HRP-conjugated anti-rabbit IgG antibody (GTX213110-01) was used to detect the primary antibody.



**GTX641653 Image**

Specificity test was performed by coating the plate with recombinant CaMKII alpha non-phospho peptide, CaMKII alpha (phospho Thr286) peptide, CaMKII beta non-phospho peptide, CaMKII beta (phospho Thr287) peptide, CaMKII delta non-phospho peptide, CaMKII delta (phospho Thr287) peptide, CaMKII gamma non-phospho peptide, and CaMKII gamma (phospho Thr287) peptide (250 ng/mL). Coated protein was probed with CaMKII (phospho Thr286) antibody [HL3662] (GTX641653) (1 µg/mL). Goat anti-rabbit IgG antibody (HRP) (GTX213110-01) (1:10000) was used to detect the bound primary antibody.



For full product information, images and publications, please visit our [website](#).