

# Sds23 (S. pombe) antibody

**Cat. No. GTX64166**

<b>Host</b>	Rabbit
<b>Clonality</b>	Polyclonal
<b>Isotype</b>	IgG
<b>Applications</b>	WB
<b>Reactivity</b>	Schizosaccharomyces pombe

**Package**  
100 µl

## Applications

### Application Note

Western blotting (1:500 dilution)

**Product Note** Reacts with S. pombe Sds23 protein

## Properties

<b>Form</b>	Liquid
<b>Buffer</b>	Serum
<b>Preservative</b>	0.05% Sodium azide
<b>Storage</b>	Store as concentrated solution. Centrifuge briefly prior to opening vial. For short-term storage (1-2 weeks), store at 4°C. For long-term storage, aliquot and store at -20°C or below. Avoid multiple freeze-thaw cycles.
<b>Concentration</b>	Batch dependent (Please refer to the vial label for the specific concentration.)
<b>Immunogen</b>	Recombinant S. pombe Sds23 corresponding to amino acids 98-345
<b>Conjugation</b>	Unconjugated

### Note

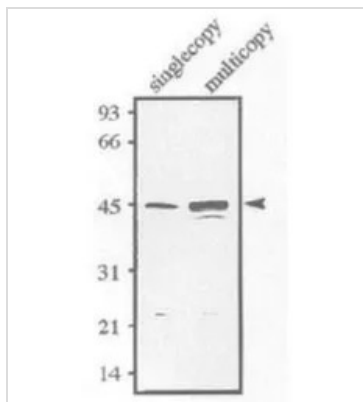
For laboratory research use only. Not for any clinical, therapeutic, or diagnostic use in humans or animals. Not for animal or human consumption.

Purchasers shall not, and agree not to enable third parties to, analyze, copy, reverse engineer or otherwise attempt to determine the structure or sequence of the product.



For full product information, images and publications, please visit our [website](#).

## DATA IMAGES



### GTX64166 WB Image

Identification of Sds23 protein. Extracts of wild-type and wild-type carrying psds23 were made and immunoblotted using anti-Sds23 antibodies.



For full product information, images and publications, please visit our [website](#).