

## Shugoshin 1 (S. pombe) antibody

Cat. No. GTX64167

Host	Rabbit
Clonality	Polyclonal
Isotype	IgG
Applications	WB, ICC/IF, IHC
Reactivity	Schizosaccharomyces pombe

Package  
100 µl

## Applications

## Application Note

Western blotting (1,000 fold dilution), Immunofluorescence staining (100 fold dilution)

Calculated MW 37 kDa. ( [Note](#) )

## Properties

Form	Liquid
Buffer	Filter-sterilized PBS, 0.1% BSA, 50% Glycerol
Preservative	No preservatives
Storage	Store as concentrated solution. Centrifuge briefly prior to opening vial. For short-term storage (1-2 weeks), store at 4°C. For long-term storage, aliquot and store at -20°C or below. Avoid multiple freeze-thaw cycles.
Concentration	Batch dependent (Please refer to the vial label for the specific concentration.)
Immunogen	Shugoshin 1 (S. pombe)
Conjugation	Unconjugated

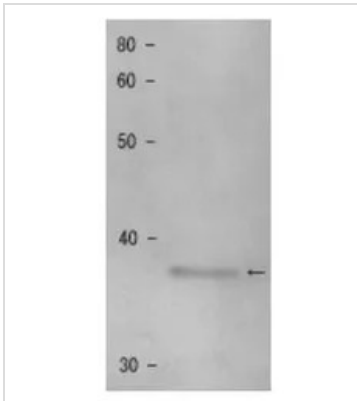
## Note

For laboratory research use only. Not for any clinical, therapeutic, or diagnostic use in humans or animals. Not for animal or human consumption.

Purchasers shall not, and agree not to enable third parties to, analyze, copy, reverse engineer or otherwise attempt to determine the structure or sequence of the product.

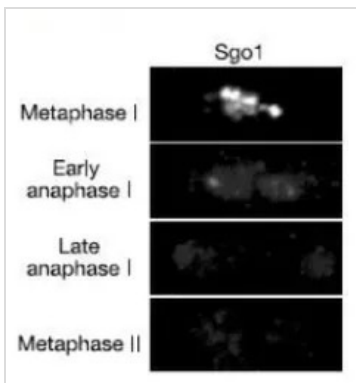
For full product information, images and publications, please visit our [website](#).

## DATA IMAGES



### GTX64167 WB Image

Detection of shugoshin 1 protein by Western blotting. Sample: Extract of MP111 cells. The antiserum was diluted 1000 fold before use.



### GTX64167 IHC Image

Immunostaining of Shugoshin 1 in synchronized diploid fission yeast. Sgo 1 protein was detected with this antibody and Alexa-488-conjugated anti-rabbit antibody.



For full product information, images and publications, please visit our [website](https://www.genetex.com).