

## Spt3 (S. cerevisiae) antibody

**Cat. No. GTX64168**

<b>Host</b>	Rabbit
<b>Clonality</b>	Polyclonal
<b>Isotype</b>	IgG
<b>Applications</b>	WB, ELISA
<b>Reactivity</b>	Saccharomyces cerevisiae

**Package**  
100 µl

### Applications

#### Application Note

Western blotting (1:2,000-1:5,000)

**Calculated MW** 39 kDa. ( [Note](#) )

### Properties

<b>Form</b>	Liquid
<b>Buffer</b>	Serum
<b>Preservative</b>	0.1% Sodium azide
<b>Storage</b>	Store as concentrated solution. Centrifuge briefly prior to opening vial. For short-term storage (1-2 weeks), store at 4°C. For long-term storage, aliquot and store at -20°C or below. Avoid multiple freeze-thaw cycles.
<b>Concentration</b>	Batch dependent (Please refer to the vial label for the specific concentration.)
<b>Immunogen</b>	Recombinant His-tagged S. cerevisiae Spt (1-200 aa).
<b>Conjugation</b>	Unconjugated

#### Note

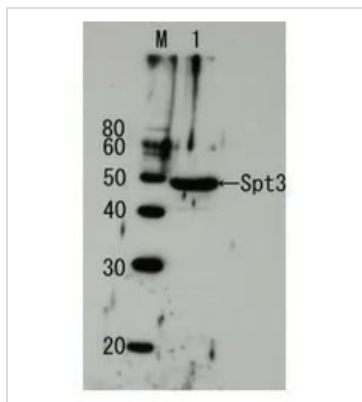
For laboratory research use only. Not for any clinical, therapeutic, or diagnostic use in humans or animals. Not for animal or human consumption.

Purchasers shall not, and agree not to enable third parties to, analyze, copy, reverse engineer or otherwise attempt to determine the structure or sequence of the product.



For full product information, images and publications, please visit our [website](#).

## DATA IMAGES



### GTX64168 WB Image

Detection of endogenous Spt3 by Western blotting using the Spt3 antibody Lane1: Extract of budding yeast The antiserum was diluted 5,000 fold before use.



For full product information, images and publications, please visit our [website](https://www.genetex.com).