

Streptolysin O antibody

Cat. No. GTX64171

Host	Rabbit
Clonality	Polyclonal
Isotype	IgG
Applications	WB, IP, Dot, ELISA, Neutralizing /Inhibition
Reactivity	Streptococcus

References (2)

Package

100 µl

Applications

Application Note

Western blotting (1:2,000-1:10,000 dilution)

Properties

Form	Liquid
Buffer	Serum
Preservative	0.09% Sodium azide
Storage	Store as concentrated solution. Centrifuge briefly prior to opening vial. For short-term storage (1-2 weeks), store at 4°C. For long-term storage, aliquot and store at -20°C or below. Avoid multiple freeze-thaw cycles.
Concentration	Batch dependent (Please refer to the vial label for the specific concentration.)
Immunogen	His6-tagged full-size recombinant SLO of <i>S. dysgalactiae</i> subsp. <i>equismilis</i> H46A (group C hemolytic Streptococci) expressed and highly purified from <i>E. coli</i>
Conjugation	Unconjugated

Note

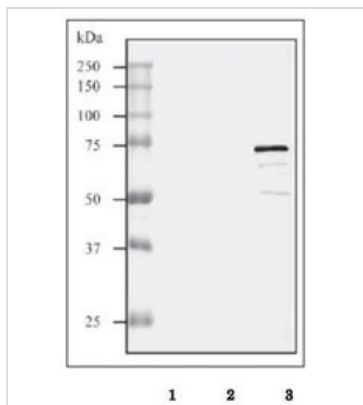
For laboratory research use only. Not for any clinical, therapeutic, or diagnostic use in humans or animals. Not for animal or human consumption.

Purchasers shall not, and agree not to enable third parties to, analyze, copy, reverse engineer or otherwise attempt to determine the structure or sequence of the product.



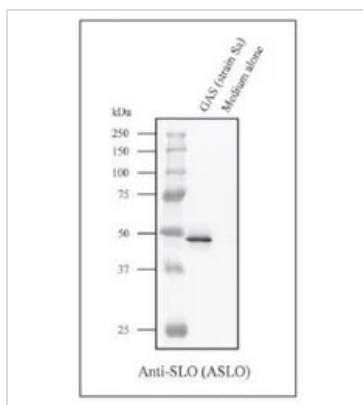
For full product information, images and publications, please visit our [website](#).

DATA IMAGES



GTX64171 WB Image

Western blot analysis of culture supernatant from GAS strain Sa and GCS strain H46A with the anti-SLO antibody. Lane 1; Medium only Lane 2*; Culture supernatant of GAS strain Sa Lane 3**; Culture supernatant of GCS strain H46A The antibody was used at 1/2,000 dilution * Most of SLO in culture medium of GAS strain Sa is proteolytically degraded, accounting for low activity level of SLO in the culture of this strain. Condensed sample is analyzed in Fig. 2. ** The two faint bands below SLO band are partially degraded SLO.



GTX64171 WB Image

Western blot analysis of concentrated culture supernatant of GAS strain Sa with the anti-SLO antibody. Culture supernatant was approximately 1,000~2,000 fold concentrated from culture medium by ammonium fractionation and heat-precipitation. Lane 1; Concentrated culture of GSA strain Sa Lane 2; Concentrated medium only



For full product information, images and publications, please visit our [website](#).