

Sua7 / TFIIB (S. cerevisiae) antibody

Cat. No. GTX64172

| | |
|--------------|---------------------------|
| Host | Rabbit |
| Clonality | Polyclonal |
| Isotype | IgG |
| Applications | WB, IP, ELISA, ChIP assay |
| Reactivity | Saccharomyces cerevisiae |

References (1)

Package

100 µl

Applications

Application Note

Western blotting. (1:1,000-1:5,000)

Calculated MW 38 kDa. ([Note](#))

Properties

| | |
|---------------|--|
| Form | Liquid |
| Buffer | Serum |
| Preservative | 0.1% Sodium azide |
| Storage | Store as concentrated solution. Centrifuge briefly prior to opening vial. For short-term storage (1-2 weeks), store at 4°C. For long-term storage, aliquot and store at -20°C or below. Avoid multiple freeze-thaw cycles. |
| Concentration | Batch dependent (Please refer to the vial label for the specific concentration.) |
| Immunogen | Rcombinant His-tagged full-size Sua7 protein |
| Conjugation | Unconjugated |

Note

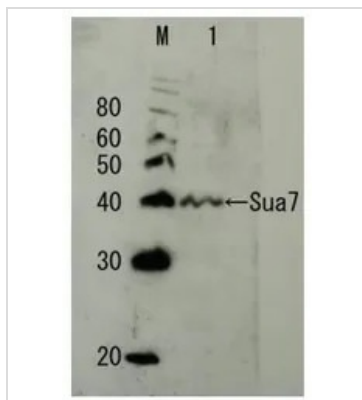
For laboratory research use only. Not for any clinical, therapeutic, or diagnostic use in humans or animals. Not for animal or human consumption.

Purchasers shall not, and agree not to enable third parties to, analyze, copy, reverse engineer or otherwise attempt to determine the structure or sequence of the product.



For full product information, images and publications, please visit our [website](#).

DATA IMAGES



GTX64172 WB Image

Detection of endogenous Sua7 protein by Western blotting. M; protein size marker in kDa Lane1, Crude extract of *S. cerevisiae* The antiserum was diluted 5000 fold before use.



For full product information, images and publications, please visit our [website](https://www.genetex.com).