

Taf14 (*S. cerevisiae*) antibody**Cat. No. GTX64177**

Host	Rabbit
Clonality	Polyclonal
Isotype	IgG
Applications	WB
Reactivity	Saccharomyces cerevisiae

References (1)

Package

100 µl

Applications

Application Note

Western blotting (1:500-1:2,000).

Calculated MW 27 kDa. ([Note](#))

Properties

Form	Liquid
Buffer	Serum
Preservative	0.1% Sodium azide
Storage	Store as concentrated solution. Centrifuge briefly prior to opening vial. For short-term storage (1-2 weeks), store at 4°C. For long-term storage, aliquot and store at -20°C or below. Avoid multiple freeze-thaw cycles.
Concentration	Batch dependent (Please refer to the vial label for the specific concentration.)
Immunogen	Recombinant His-tagged Taf14 protein (full-length; 1-244 aa) produced in E. coli
Conjugation	Unconjugated

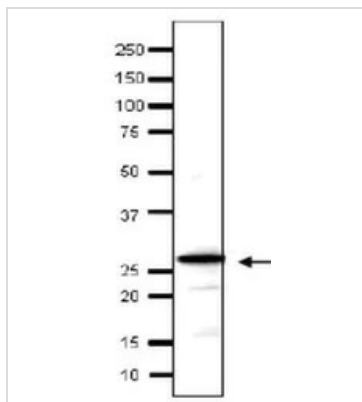
Note

For laboratory research use only. Not for any clinical, therapeutic, or diagnostic use in humans or animals. Not for animal or human consumption.

Purchasers shall not, and agree not to enable third parties to, analyze, copy, reverse engineer or otherwise attempt to determine the structure or sequence of the product.

For full product information, images and publications, please visit our [website](#).

DATA IMAGES



GTX64177 WB Image

Detection of endogenous Taf14 in whole cell extract of *S. cerevisiae* by Western blotting, using the anti-Taf14 antibody. The antibody was used at 1/500 dilution. As second antibody, HRP-conjugated goat anti-rabbit IgG was used at 1/10,000



For full product information, images and publications, please visit our [website](#).