

Tfa1 / TFII Ea (S. cerevisiae) antibody

Cat. No. GTX64183

Host	Rabbit
Clonality	Polyclonal
Isotype	IgG
Applications	WB
Reactivity	Saccharomyces cerevisiae

Package
100 µl

Applications

Application Note

Western blotting (1:2,000).

Calculated MW 55 kDa. ([Note](#))

Properties

Form	Liquid
Buffer	Serum
Preservative	0.1% Sodium azide
Storage	Store as concentrated solution. Centrifuge briefly prior to opening vial. For short-term storage (1-2 weeks), store at 4°C. For long-term storage, aliquot and store at -20°C or below. Avoid multiple freeze-thaw cycles.
Concentration	Batch dependent (Please refer to the vial label for the specific concentration.)
Immunogen	Recombinant His-tagged Tfa1 protein (1-482 aa) produced in E. coli
Conjugation	Unconjugated

Note

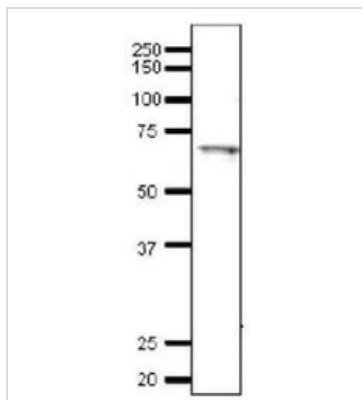
For laboratory research use only. Not for any clinical, therapeutic, or diagnostic use in humans or animals. Not for animal or human consumption.

Purchasers shall not, and agree not to enable third parties to, analyze, copy, reverse engineer or otherwise attempt to determine the structure or sequence of the product.



For full product information, images and publications, please visit our [website](#).

DATA IMAGES



GTx64183 WB Image

Detection of endogenous Tfa1 in whole cell extract of *S. cerevisiae* by Western blotting, using the anti-Tfa1 antibody. The antibody was used at 1/2,000 dilution. As second antibody, HRP-conjugated goat anti-rabbit IgG was used at 1/10,000. The apparent molecular mass (~65 kDa) is larger than calculated mass of 55 kDa, which may be due to its highly acidic cluster at C-terminal 106 amino-acids (Asp/Glu rich).



For full product information, images and publications, please visit our [website](https://www.genetex.com).