

Verotoxin / Shiga toxin (SLT-1 + SLT-2) antibody

Cat. No. GTX64191

Host	Rabbit
Clonality	Polyclonal
Isotype	IgG
Applications	WB, IP, ELISA
Reactivity	E. coli

Package
100 µl

Applications

Application Note

Western blotting (2,000 fold dilution)

Properties

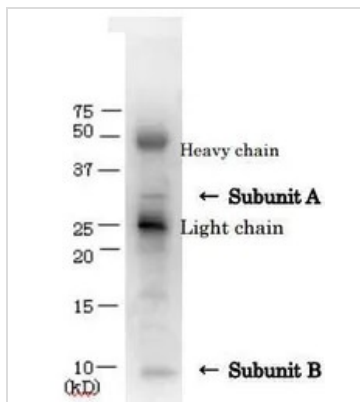
Form	Liquid
Buffer	Serum
Preservative	0.09% Sodium azide
Storage	Store as concentrated solution. Centrifuge briefly prior to opening vial. For short-term storage (1-2 weeks), store at 4°C. For long-term storage, aliquot and store at -20°C or below. Avoid multiple freeze-thaw cycles.
Concentration	Batch dependent (Please refer to the vial label for the specific concentration.)
Immunogen	Initial immunization by VT1 toxoid and booster by VT1 toxin.
Conjugation	Unconjugated
Note	<p>For laboratory research use only. Not for any clinical, therapeutic, or diagnostic use in humans or animals. Not for animal or human consumption.</p> <p>Purchasers shall not, and agree not to enable third parties to, analyze, copy, reverse engineer or otherwise attempt to determine the structure or sequence of the product.</p>



For full product information, images and publications, please visit our [website](#).

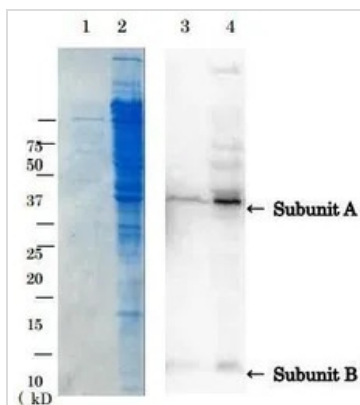
Date 2026 / 01 / 12 Page 1 of 2

DATA IMAGES



GTX64191 IP Image

Immunoprecipitation of VT1 from culture medium of VTEC with anti-VT1 antibody. Arrows show subunit A and subunit B of VT1. Heavy chain and Light chain indicate those of IgG.



GTX64191 WB Image

Detection of VT1 by western blotting with anti-VT1 antibody. 1. SDS-PAGE of culture medium of VTEC, stained with CBB. 2. SDS-PAGE of crude extracts of VTEC cells, stained with CBB. 3. Western blotting of culture medium of VTEC. 4. Western blotting of crude extracts of VTEC cells. Anti-VT1 antibody was used at 1/2,000 dilution.



For full product information, images and publications, please visit our [website](https://www.genetex.com).