

## alpha 2a Adrenergic Receptor antibody [HL3723]

Cat. No. GTX641913

Host	Rabbit
Clonality	Monoclonal
Isotype	IgG
Applications	WB
Reactivity	Human, Mouse

 Review ( 1 )Package  
100 µl, 25 µl

## Applications

## Application Note

\*Optimal dilutions/concentrations should be determined by the researcher.

Suggested dilution	Recommended dilution
WB	1:500-1:3000

Not tested in other applications.

**Observed MW (kDa)** 45-50 (de-glycosylated form),55-80 (glycosylated form) kDa.

**Product Note** This antibody is specific for human ADRA2A protein and does not cross react with human ADRA1A, ADRA1B, ADRA1D, ADRB1, and ADRB2 protein.  
This antibody was raised against human alpha 2a Adrenergic Receptor Intracellular domain.

## Properties

Form	Liquid
Buffer	PBS
Preservative	No preservative
Storage	Store as concentrated solution. Centrifuge briefly prior to opening vial. For short-term storage (1-2 weeks), store at 4°C. For long-term storage, aliquot and store at -20°C or below. Avoid multiple freeze-thaw cycles.
Concentration	1 mg/ml (Please refer to the vial label for the specific concentration.)
Immunogen	Recombinant protein encompassing a sequence within the Intracellular domain of human alpha 2a Adrenergic Receptor. The exact sequence is proprietary.
Purification	Affinity purified by Protein A.
Conjugation	Unconjugated



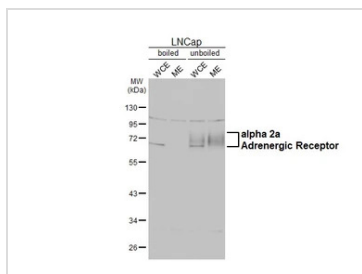
For full product information, images and publications, please visit our [website](#).

Date 2025 / 07 / 17 Page 1 of 2

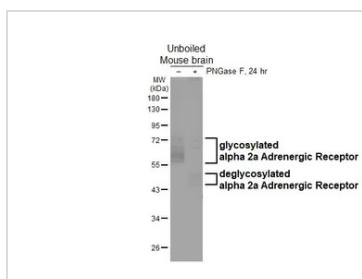
For laboratory research use only. Not for any clinical, therapeutic, or diagnostic use in humans or animals. Not for animal or human consumption.

**Note**

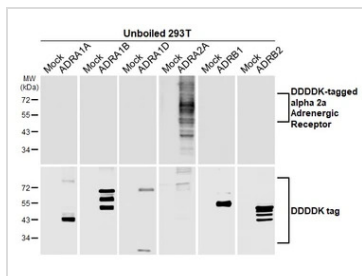
Purchasers shall not, and agree not to enable third parties to, analyze, copy, reverse engineer or otherwise attempt to determine the structure or sequence of the product.

**DATA IMAGES**

**GTX641913 WB Image**

Boiled and unboiled LNCap whole cell and membrane extracts (30 µg) were separated by 10% SDS-PAGE, and the membrane was blotted with alpha 2a Adrenergic Receptor antibody [HL3723] (GTX641913) diluted at 1:1000. The HRP-conjugated anti-rabbit IgG antibody (GTX213110-01) was used to detect the primary antibody. (WCE: whole cell extract; ME: membrane extract)


**GTX641913 WB Image**

Untreated (-) and treated (+) unboiled mouse tissue extracts (50 µg) were separated by 10% SDS-PAGE, and the membrane was blotted with alpha 2a Adrenergic Receptor antibody [HL3723] (GTX641913) diluted at 1:1000. The HRP-conjugated anti-rabbit IgG antibody (GTX213110-01) was used to detect the primary antibody, and the signal was developed with Trident ECL plus-Enhanced.


**GTX641913 WB Image**

Unboiled non-transfected (-) and transfected (+) 293T whole cell extracts (30 µg) were separated by 10% SDS-PAGE, and the membrane was blotted with alpha 2a Adrenergic Receptor antibody [HL3723] (GTX641913) diluted at 1:5000. The HRP-conjugated anti-rabbit IgG antibody (GTX213110-01) was used to detect the primary antibody.



For full product information, images and publications, please visit our [website](https://www.genetex.com).