

p53 (acetyl Lys370) antibody [GT1002]

Cat. No. GTX64194

Host	Rabbit
Clonality	Monoclonal
Isotype	IgG
Applications	WB, ICC/IF
Reactivity	Human

Package
100 µl

Applications

Application Note

*Optimal dilutions/concentrations should be determined by the researcher.

Suggested dilution	Recommended dilution
WB	1:1000-1:2000
ICC/IF	1:50-1:200

Not tested in other applications.

Calculated MW 44 kDa. ([Note](#))

Properties

Form	Liquid
Buffer	TBS pH7.4, 1%BSA, 40%Glycerol, 0.05% Sodium Azide
Storage	Store as concentrated solution. Centrifuge briefly prior to opening vial. For short-term storage (1-2 weeks), store at 4°C. For long-term storage, aliquot and store at -20°C or below. Avoid multiple freeze-thaw cycles.
Purification	Protein A purified
Conjugation	Unconjugated

Note

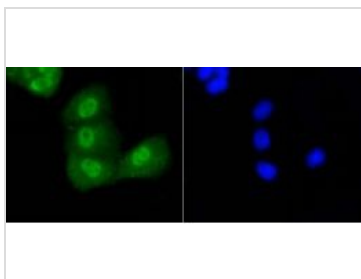
For laboratory research use only. Not for any clinical, therapeutic, or diagnostic use in humans or animals. Not for animal or human consumption.

Purchasers shall not, and agree not to enable third parties to, analyze, copy, reverse engineer or otherwise attempt to determine the structure or sequence of the product.



For full product information, images and publications, please visit our [website](#).

DATA IMAGES

**GTX64194 ICC/IF Image**

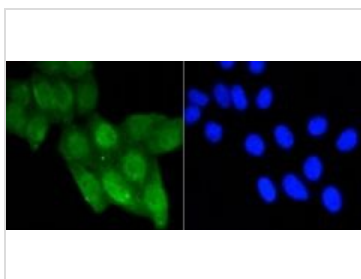
ICC/IF analysis of PANC-1 cells using GTX64194 p53 (acetyl Lys370) antibody [GT1002].

Fixation : 4% PFA

Permeabilization : 0.25% Triton X-100 in PBS

Green : Primary antibody

Blue : DAPI

**GTX64194 ICC/IF Image**

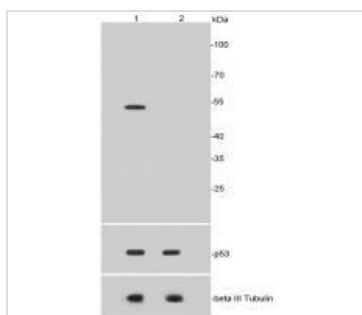
ICC/IF analysis of HepG2 cells using GTX64194 p53 (acetyl Lys370) antibody [GT1002].

Fixation : 4% PFA

Permeabilization : 0.25% Triton X-100 in PBS

Green : Primary antibody

Blue : DAPI

**GTX64194 WB Image**

WB analysis of various Samples using GTX64194 p53 (acetyl Lys370) antibody [GT1002].

Lane1 : HepG2 cells treated with Etoposide 20uM and Trichostatin A 500 nM for 6 hours

Lane2 : untreated HepG2 whole cell lysates

Dilution : 1:1000



For full product information, images and publications, please visit our [website](#).