

BASP1 antibody [HL3760]

Cat. No. GTX641959

| | |
|---------------------|--------------|
| Host | Rabbit |
| Clonality | Monoclonal |
| Isotype | IgG |
| Applications | WB, IHC-P |
| Reactivity | Human, Mouse |

 Review (1)

Package
100 µl, 25 µl

Applications

Application Note

*Optimal dilutions/concentrations should be determined by the researcher.

| Suggested dilution | Recommended dilution |
|--------------------|----------------------|
| WB | 1:500-1:3000 |
| IHC-P | Assay dependent |

Note : Antigen retrieval: Citrate acid (pH6.0) is recommended.

Not tested in other applications.

| | |
|--------------------------|--|
| Observed MW (kDa) | 48 kDa. |
| Product Note | Highly recommended for IHC-P in mouse tissues. |

Properties

| | |
|----------------------|--|
| Form | Liquid |
| Buffer | PBS |
| Preservative | No preservatives |
| Storage | Store as concentrated solution. Centrifuge briefly prior to opening vial. For short-term storage (1-2 weeks), store at 4°C. For long-term storage, aliquot and store at -20°C or below. Avoid multiple freeze-thaw cycles. |
| Concentration | 1 mg/ml (Please refer to the vial label for the specific concentration.) |
| Immunogen | Recombinant fragment of human BASP1. |
| Purification | Affinity purified by Protein A. |
| Conjugation | Unconjugated |

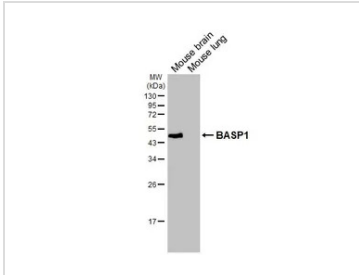


For full product information, images and publications, please visit our [website](#).

For laboratory research use only. Not for any clinical, therapeutic, or diagnostic use in humans or animals. Not for animal or human consumption.

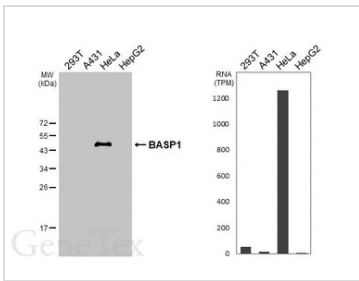
Note
Purchasers shall not, and agree not to enable third parties to, analyze, copy, reverse engineer or otherwise attempt to determine the structure or sequence of the product.

DATA IMAGES



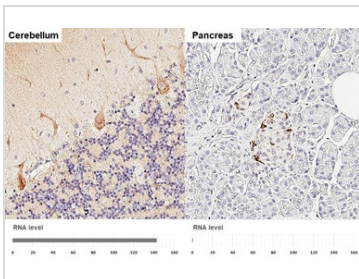
GTX641959 WB Image

Various tissue extracts (50 µg) were separated by 12% SDS-PAGE, and the membrane was blotted with BASP1 antibody [HL3760] (GTX641959) diluted at 1:1000. The HRP-conjugated anti-rabbit IgG antibody (GTX213110-01) was used to detect the primary antibody.



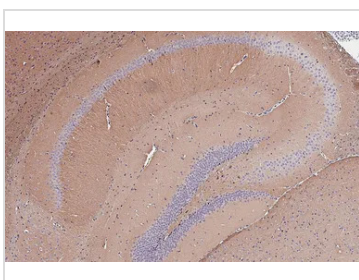
GTX641959 WB Image

Various whole cell extracts (30 µg) were separated by 12% SDS-PAGE, and the membrane was blotted with BASP1 antibody [HL3760] (GTX641959) diluted at 1:1000. The HRP-conjugated anti-rabbit IgG antibody (GTX213110-01) was used to detect the primary antibody, and the signal was developed with Trident ECL plus-Enhanced. Corresponding RNA expression data for the same cell lines are based on Human Protein Atlas program.



GTX641959 IHC-P Image

BASP1 antibody [HL3760] detects BASP1 protein by immunohistochemical analysis. Sample: Paraffin-embedded human tissues. BASP1 stained by BASP1 antibody [HL3760] (GTX641959) diluted at 1:200. Antigen Retrieval: Citrate buffer, pH 6.0, 15 min. Corresponding RNA levels (RPKM) in the tissues are based on NCBI database.



GTX641959 IHC-P Image

BASP1 antibody [HL3760] detects BASP1 protein by immunohistochemical analysis. Sample: Paraffin-embedded mouse hippocampus. BASP1 stained by BASP1 antibody [HL3760] (GTX641959) diluted at 1:250. Antigen Retrieval: Citrate buffer, pH 6.0, 15 min.



For full product information, images and publications, please visit our [website](#).