

VIP antibody [HL3846]

Cat. No. GTX642080

Host	Rabbit
Clonality	Monoclonal
Isotype	IgG
Applications	WB, ICC/IF, IHC-Fr
Reactivity	Human, Mouse

Package
100 µl, 25 µl

Applications

Application Note

*Optimal dilutions/concentrations should be determined by the researcher.

Suggested dilution	Recommended dilution
WB	1:500-1:3000
ICC/IF	Assay dependent
IHC-Fr	Assay dependent

Not tested in other applications.

Observed MW (kDa) 19 kDa.

Properties

Form	Liquid
Buffer	PBS
Preservative	No preservatives
Storage	Store as concentrated solution. Centrifuge briefly prior to opening vial. For short-term storage (1-2 weeks), store at 4°C. For long-term storage, aliquot and store at -20°C or below. Avoid multiple freeze-thaw cycles.
Concentration	1 mg/ml
Immunogen	Synthetic peptide of human VIP.
Purification	Affinity purified by Protein A.
Conjugation	Unconjugated

Note

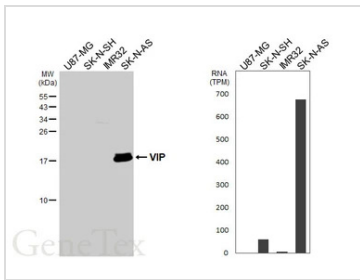
For laboratory research use only. Not for any clinical, therapeutic, or diagnostic use in humans or animals. Not for animal or human consumption.

Purchasers shall not, and agree not to enable third parties to, analyze, copy, reverse engineer or otherwise attempt to determine the structure or sequence of the product.



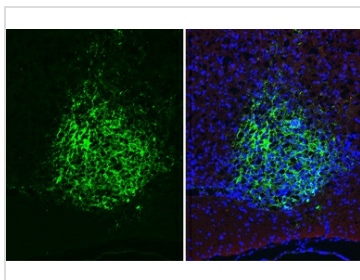
For full product information, images and publications, please visit our [website](#).

DATA IMAGES



GTX642080 WB Image

Various whole cell extracts (30 µg) were separated by 15% SDS-PAGE, and the membrane was blotted with VIP antibody [HL3846] (GTX642080) diluted at 1:1000. The HRP-conjugated anti-rabbit IgG antibody (GTX213110-01) was used to detect the primary antibody. Corresponding RNA expression data for the same cell lines are based on Human Protein Atlas program.



GTX642080 IHC-Fr Image

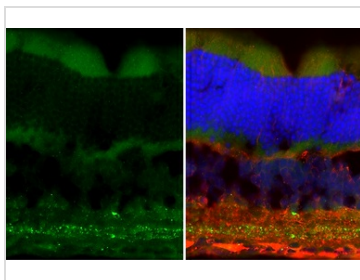
VIP antibody [HL3846] detects VIP protein at suprachiasmatic nucleus (SCN) by immunohistochemical analysis.

Sample: Frozen-sectioned mouse brain.

Green: VIP stained by VIP antibody [HL3846] (GTX642080) diluted at 1:250.

Red: beta Tubulin 3/ Tuj1 antibody [GT11710] (GTX631836) diluted at 1:500.

Blue: Fluoroshield with DAPI (GTX30920).



GTX642080 IHC-Fr Image

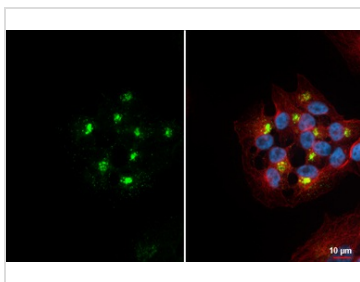
VIP antibody [HL3846] detects VIP protein by immunohistochemical analysis.

Sample: Frozen-sectioned mouse eye.

Green: VIP stained by VIP antibody [HL3846] (GTX642080) diluted at 1:250.

Red: beta Tubulin 3/ Tuj1 antibody [GT11710] (GTX631836) diluted at 1:500.

Blue: Fluoroshield with DAPI (GTX30920).



GTX642080 ICC/IF Image

VIP antibody [HL3846] detects VIP protein by immunofluorescent analysis.

Sample: SK-N-AS cells were fixed in 4% paraformaldehyde at RT for 15 min.

Green: VIP stained by VIP antibody [HL3846] (GTX642080) diluted at 1:500.

Red: alpha Tubulin, a cytoskeleton marker, stained by alpha Tubulin antibody [GT114] (GTX628802) diluted at 1:1000.

Blue: Fluoroshield with DAPI (GTX30920).



For full product information, images and publications, please visit our [website](#).