

PHACTR1 antibody [HL3954]

Cat. No. GTX642204

Host	Rabbit
Clonality	Monoclonal
Isotype	IgG
Applications	WB, IHC-P
Reactivity	Mouse, Rat

Package
100 µl, 25 µl

Applications

Application Note

*Optimal dilutions/concentrations should be determined by the researcher.

Suggested dilution	Recommended dilution
WB	1:500-1:3000
IHC-P	Assay dependent

Note : Antigen retrieval: Tris-EDTA (pH9.0) is recommended.

Not tested in other applications.

Observed MW (kDa) 74 kDa.

Product Note Highly recommended for IHC-P in mouse and rat tissues.

Properties

Form	Liquid
Buffer	PBS
Preservative	No preservatives
Storage	Store as concentrated solution. Centrifuge briefly prior to opening vial. For short-term storage (1-2 weeks), store at 4°C. For long-term storage, aliquot and store at -20°C or below. Avoid multiple freeze-thaw cycles.
Concentration	1 mg/ml
Immunogen	Recombinant fragment of human PHACTR1.
Purification	Affinity purified by Protein A.
Conjugation	Unconjugated

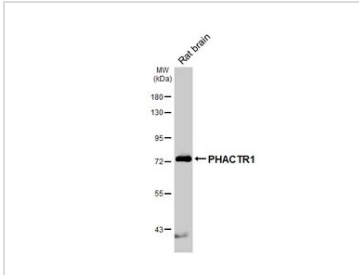


For full product information, images and publications, please visit our [website](#).

For laboratory research use only. Not for any clinical, therapeutic, or diagnostic use in humans or animals. Not for animal or human consumption.

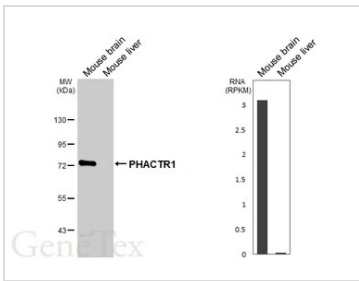
Note
 Purchasers shall not, and agree not to enable third parties to, analyze, copy, reverse engineer or otherwise attempt to determine the structure or sequence of the product.

DATA IMAGES



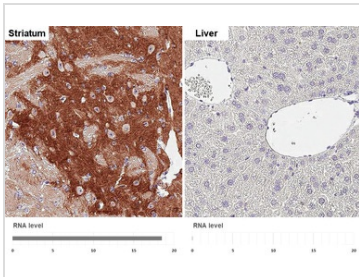
GTX642204 WB Image

Rat tissue extract (50 µg) was separated by 7.5% SDS-PAGE, and the membrane was blotted with PHACTR1 antibody [HL3954] (GTX642204) diluted at 1:1000. The HRP-conjugated anti-rabbit IgG antibody (GTX213110-01) was used to detect the primary antibody.



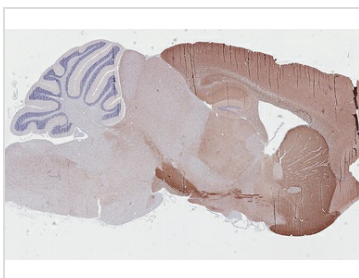
GTX642204 WB Image

Various tissue extracts (50 µg) were separated by 7.5% SDS-PAGE, and the membrane was blotted with PHACTR1 antibody [HL3954] (GTX642204) diluted at 1:1000. The HRP-conjugated anti-rabbit IgG antibody (GTX213110-01) was used to detect the primary antibody. Corresponding RNA expression data are based on NCBI database.



GTX642204 IHC-P Image

PHACTR1 antibody [HL3954] detects PHACTR1 protein by immunohistochemical analysis. Sample: Paraffin-embedded mouse tissues. PHACTR1 stained by PHACTR1 antibody [HL3954] (GTX642204) diluted at 1:200. Antigen Retrieval: Tris-EDTA buffer, pH 9.0, 15 min. Corresponding RNA levels (RPKM) in the tissues are based on NCBI database.



GTX642204 IHC-P Image

PHACTR1 antibody [HL3954] detects PHACTR1 protein by immunohistochemical analysis. Sample: Paraffin-embedded mouse brain. PHACTR1 stained by PHACTR1 antibody [HL3954] (GTX642204) diluted at 1:200. Antigen Retrieval: Tris-EDTA buffer, pH 9.0, 15 min



For full product information, images and publications, please visit our [website](#).