

ENaC Alpha antibody [HL3980]

Cat. No. GTX642306

Host	Rabbit
Clonality	Monoclonal
Isotype	IgG
Applications	WB, IHC-P
Reactivity	Mouse

Package
100 µl, 25 µl

Applications

Application Note

*Optimal dilutions/concentrations should be determined by the researcher.

Suggested dilution	Recommended dilution
WB	Assay dependent
IHC-P	1:100-1:1000

Not tested in other applications.

Product Note This antibody was raised against human ENaC Alpha Extracellular domain.

Properties

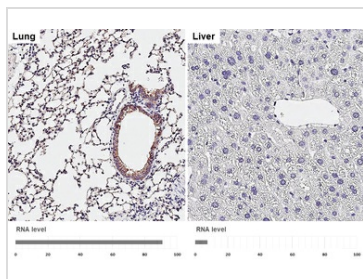
Form	Liquid
Buffer	PBS
Preservative	No Preservative
Storage	Store as concentrated solution. Centrifuge briefly prior to opening vial. For short-term storage (1-2 weeks), store at 4°C. For long-term storage, aliquot and store at -20°C or below. Avoid multiple freeze-thaw cycles.
Concentration	batch dependent
Immunogen	Recombinant protein encompassing a sequence within the Extracellular domain of human ENaC Alpha. The exact sequence is proprietary.
Purification	Affinity purified by Protein A.
Conjugation	Unconjugated

Note For laboratory research use only. Not for any clinical, therapeutic, or diagnostic use in humans or animals. Not for animal or human consumption.

Purchasers shall not, and agree not to enable third parties to, analyze, copy, reverse engineer or otherwise attempt to determine the structure or sequence of the product.



For full product information, images and publications, please visit our [website](#).

DATA IMAGES

GTx642306 IHC-P Image

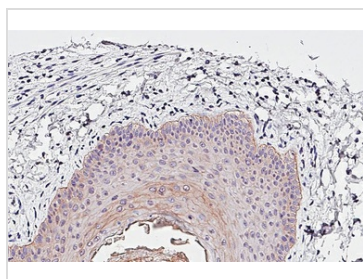
ENaC Alpha antibody [HL3980] detects ENaC Alpha protein by immunohistochemical analysis.

Sample: Paraffin-embedded mouse tissues.

ENaC Alpha stained by ENaC Alpha antibody [HL3980] (GTx642306) diluted at 1:200.

Antigen Retrieval: Citrate buffer, pH 6.0, 15 min

Corresponding RNA levels (RPKM) in the tissues are based on NCBI database.

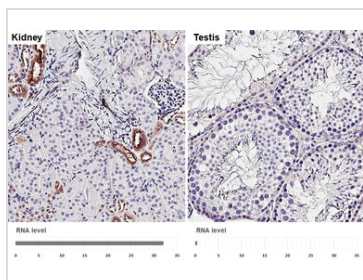

GTx642306 IHC-P Image

ENaC Alpha antibody [HL3980] detects ENaC Alpha protein by immunohistochemical analysis.

Sample: Paraffin-embedded mouse uterus.

ENaC Alpha stained by ENaC Alpha antibody [HL3980] (GTx642306) diluted at 1:200.

Antigen Retrieval: Citrate buffer, pH 6.0, 15 min


GTx642306 IHC-P Image

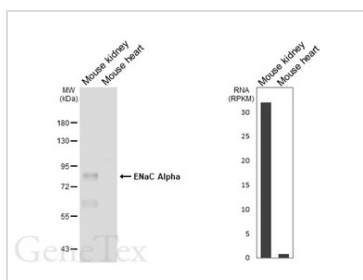
ENaC Alpha antibody [HL3980] detects ENaC Alpha protein by immunohistochemical analysis.

Sample: Paraffin-embedded mouse tissues.

ENaC Alpha stained by ENaC Alpha antibody [HL3980] (GTx642306) diluted at 1:200.

Antigen Retrieval: Citrate buffer, pH 6.0, 15 min

Corresponding RNA levels (RPKM) in the tissues are based on NCBI database.


GTx642306 WB Image

Various tissue extracts (50 µg) were separated by 7.5% SDS-PAGE, and the membrane was blotted with ENaC Alpha antibody [HL3980] (GTx642306) diluted at 1:1000. The HRP-conjugated anti-rabbit IgG antibody (GTx213110-01) was used to detect the primary antibody. Corresponding RNA expression data are based on NCBI database.



For full product information, images and publications, please visit our [website](https://www.genetex.com).