

CD81 antibody [HL4048]

Cat. No. GTX642463

Host	Rabbit
Clonality	Monoclonal
Isotype	IgG
Applications	ELISA, Sandwich ELISA
Reactivity	Human

Package
100 µl, 25 µl

Applications

Application Note

*Optimal dilutions/concentrations should be determined by the researcher.

Suggested dilution	Recommended dilution
ELISA	Assay dependent
Sandwich ELISA	Assay dependent

Note : Capture : GTX135297, Detection : GTX642463.

Please notice that the detected antibody needs to be conjugated to HRP to function when paired with capture antibody.

Please contact us for custom HRP-conjugated antibody.

Not tested in other applications.

Product Note This antibody was raised against human CD81 Extracellular domain.

Properties

Form	Liquid
Buffer	PBS
Preservative	No preservatives
Storage	Store as concentrated solution. Centrifuge briefly prior to opening vial. For short-term storage (1-2 weeks), store at 4°C. For long-term storage, aliquot and store at -20°C or below. Avoid multiple freeze-thaw cycles.
Concentration	1 mg/ml
Immunogen	Recombinant protein encompassing a sequence within the Extracellular domain of human CD81. The exact sequence is proprietary.
Purification	Affinity purified by Protein A.
Conjugation	Unconjugated



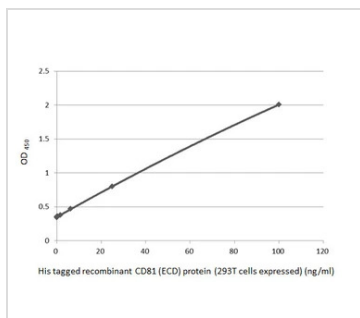
For full product information, images and publications, please visit our [website](#).

Date 2026 / 02 / 03 Page 1 of 2

For laboratory research use only. Not for any clinical, therapeutic, or diagnostic use in humans or animals. Not for animal or human consumption.

Note

Purchasers shall not, and agree not to enable third parties to, analyze, copy, reverse engineer or otherwise attempt to determine the structure or sequence of the product.

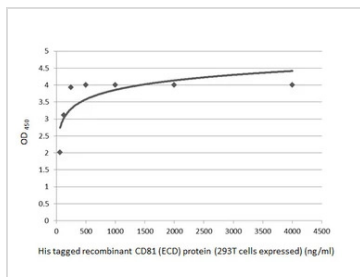
DATA IMAGES

GTX642463 ELISA Image

Sandwich ELISA detection of His tagged recombinant CD81 (ECD) protein (293T cells expressed) using antibodies as below.

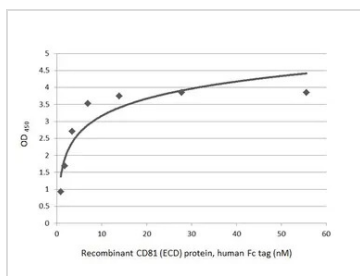
Capture: CD81 antibody (GTX135297) (5 µg/mL)

Detection: HRP-conjugated CD81 antibody [HL4048] (GTX642463) (1 µg/mL)

Please notice that GTX642463 needs to be conjugated to HRP to function as the detection antibody when paired with GTX135297. Please contact us for custom HRP-conjugated antibody.


GTX642463 ELISA Image

Indirect ELISA analysis was performed by coating the plate with His tagged recombinant CD81 (ECD) protein (293T cells expressed) (62.5-4000 ng/mL). Coated protein was probed with CD81 antibody [HL4048] (GTX642463) (1 µg/mL). Goat anti-rabbit IgG antibody (HRP) (GTX213110-01) (1:10000) was used to detect the bound primary antibody.


GTX642463 ELISA Image

Indirect ELISA analysis was performed by coating the plate with HEK293 expressed, recombinant human CD81 (ECD) protein, human Fc tag (GTX144106-pro) (55.56-0.87 nM). Coated protein was probed with CD81 antibody [HL4048] (GTX642463) (1 µg/mL). Goat anti-rabbit IgG antibody (HRP) (GTX213110-01) (1:10000) was used to detect the bound primary antibody.



For full product information, images and publications, please visit our [website](https://www.genetex.com).