

Ki67 antibody [HL4117]

Cat. No. GTX642563

Host	Rabbit
Clonality	Monoclonal
Isotype	IgG
Applications	WB, ICC/IF, IHC-P
Reactivity	Human

Package
100 µl, 25 µl

Applications

Application Note

*Optimal dilutions/concentrations should be determined by the researcher.

Suggested dilution	Recommended dilution
WB	Assay dependent
ICC/IF	Assay dependent
IHC-P	1:100-1:2000

Note : Antigen retrieval: Tris-EDTA (pH9.0) is recommended.

Not tested in other applications.

Observed MW (kDa) > 180 kDa.

Product Note Highly recommended for IHC-P in human tissues.

Properties

Form	Liquid
Buffer	PBS, 20% Glycerol, 1% BSA
Preservative	ProClin 300
Storage	Store as concentrated solution. Centrifuge briefly prior to opening vial. For short-term storage (1-2 weeks), store at 4°C. For long-term storage, aliquot and store at -20°C or below. Avoid multiple freeze-thaw cycles.
Concentration	0.1 mg/ml (Please refer to the vial label for the specific concentration.)
Immunogen	Recombinant fragment of human Ki67.
Purification	Affinity purified by Protein A.
Conjugation	Unconjugated

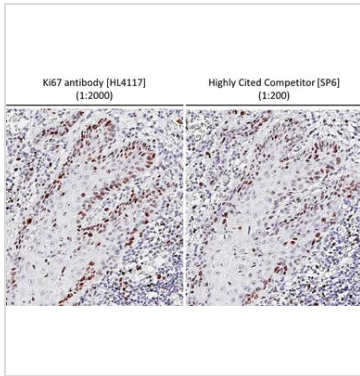


For full product information, images and publications, please visit our [website](#).

For laboratory research use only. Not for any clinical, therapeutic, or diagnostic use in humans or animals. Not for animal or human consumption.

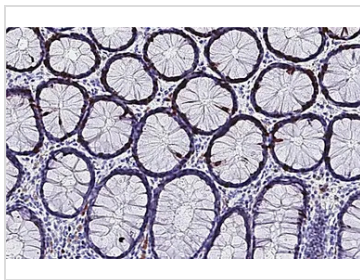
Note
 Purchasers shall not, and agree not to enable third parties to, analyze, copy, reverse engineer or otherwise attempt to determine the structure or sequence of the product.

DATA IMAGES



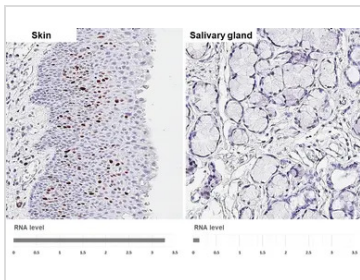
GTX642563 IHC-P Image

Ki67 antibody [HL4117] detects Ki67 protein by immunohistochemical analysis.
 Sample: Paraffin-embedded human oral carcinoma.
 Ki67 stained by Ki67 antibody [HL4117] (GTX642563) diluted at 1:2000 and highly cited competitor's antibody diluted at 1:200.
 Antigen Retrieval: Tris-EDTA buffer, pH 9.0, 15 min
 *Competitor's antibody is not affiliated with GeneTex and does not endorse this product.
 *The competitor is not affiliated with GeneTex and does not endorse this product.



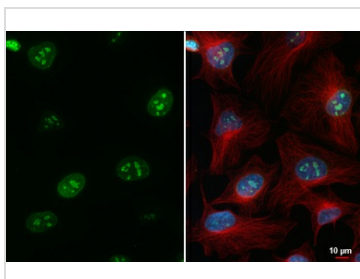
GTX642563 IHC-P Image

Ki67 antibody [HL4117] detects Ki67 protein by immunohistochemical analysis.
 Sample: Paraffin-embedded human colon.
 Ki67 stained by Ki67 antibody [HL4117] (GTX642563) diluted at 1:2000.
 Antigen Retrieval: Tris-EDTA buffer, pH 9.0, 15 min



GTX642563 IHC-P Image

Ki67 antibody [HL4117] detects Ki67 protein by immunohistochemical analysis.
 Sample: Paraffin-embedded human tissues.
 Ki67 stained by Ki67 antibody [HL4117] (GTX642563) diluted at 1:2000.
 Antigen Retrieval: Tris-EDTA buffer, pH 9.0, 15 min
 Corresponding RNA levels (RPKM) in the tissues are based on NCBI database.



GTX642563 ICC/IF Image

Ki67 antibody [HL4117] detects Ki67 protein by immunofluorescent analysis.
 Sample: HeLa cells were fixed in ice-cold MeOH for 5 min.
 Green: Ki67 stained by Ki67 antibody [HL4117] (GTX642563) diluted at 1:500.
 Red: alpha Tubulin, a cytoskeleton marker, stained by alpha Tubulin antibody [GT114] (GTX628802) diluted at 1:1000.
 Blue: Fluoroshield with DAPI (GTX30920).



For full product information, images and publications, please visit our [website](#).