

BAI1 antibody [HL4186]

Cat. No. GTX643000

Host	Rabbit
Clonality	Monoclonal
Isotype	IgG
Applications	WB
Reactivity	Human

Package

100 µl, 25 µl

Applications

Application Note

*Optimal dilutions/concentrations should be determined by the researcher.

Suggested dilution	Recommended dilution
WB	1:500-1:3000

Not tested in other applications.

Observed MW (kDa) 150-200 (total form) kDa.

Product Note

This antibody is specific for human BAI1 protein and does not cross react with human BAI2 and BAI3 protein. It was raised against human BAI1 Extracellular domain.

Properties

Form	Liquid
Buffer	PBS
Preservative	No Preservative
Storage	Store as concentrated solution. Centrifuge briefly prior to opening vial. For short-term storage (1-2 weeks), store at 4°C. For long-term storage, aliquot and store at -20°C or below. Avoid multiple freeze-thaw cycles.
Concentration	batch dependent
Immunogen	Synthetic peptide encompassing a sequence within the Extracellular domain of human BAI1. The exact sequence is proprietary.
Purification	Affinity purified by Protein A.
Conjugation	Unconjugated

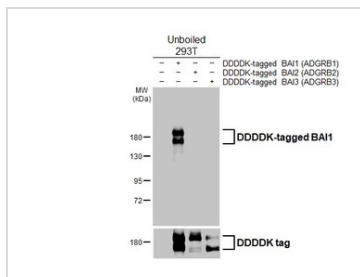
Note

For laboratory research use only. Not for any clinical, therapeutic, or diagnostic use in humans or animals. Not for animal or human consumption.

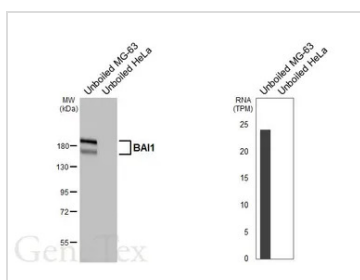
Purchasers shall not, and agree not to enable third parties to, analyze, copy, reverse engineer or otherwise attempt to determine the structure or sequence of the product.



For full product information, images and publications, please visit our [website](#).

DATA IMAGES

GTX643000 WB Image

Non-transfected (–) and transfected (+) unboiled 293T whole cell extracts were separated by 7.5% SDS-PAGE, and the membrane was blotted with BAI1 antibody [HL4186] (GTX643000) diluted at 1:5000. The HRP-conjugated anti-rabbit IgG antibody (GTX213110-01) was used to detect the primary antibody.


GTX643000 WB Image

Unboiled various whole cell extracts (50 µg) were separated by 7.5% SDS-PAGE, and the membrane was blotted with BAI1 antibody [HL4186] (GTX643000) diluted at 1:1000. The HRP-conjugated anti-rabbit IgG antibody (GTX213110-01) was used to detect the primary antibody. Corresponding RNA expression data are based on Human Protein Atlas program.



For full product information, images and publications, please visit our [website](https://www.genetex.com).