

# BAI1 antibody [HL4190]

**Cat. No. GTX643004**

<b>Host</b>	Rabbit
<b>Clonality</b>	Monoclonal
<b>Isotype</b>	IgG
<b>Applications</b>	WB, IHC-P
<b>Reactivity</b>	Mouse, Rat

**Package**  
100 µl, 25 µl

## Applications

### Application Note

\*Optimal dilutions/concentrations should be determined by the researcher.

Suggested dilution	Recommended dilution
WB	1:500-1:3000
IHC-P	Assay dependent

Not tested in other applications.

**Observed MW (kDa)** 75 (C-terminal fragment, CTF), 150-200 (total form) kDa.

**Product Note** This antibody detects both full-length BAI1 as well as the C-terminal fragment BAI1 form.

## Properties

<b>Form</b>	Liquid
<b>Buffer</b>	PBS
<b>Preservative</b>	No preservative
<b>Storage</b>	Store as concentrated solution. Centrifuge briefly prior to opening vial. For short-term storage (1-2 weeks), store at 4°C. For long-term storage, aliquot and store at -20°C or below. Avoid multiple freeze-thaw cycles.
<b>Concentration</b>	1 mg/ml
<b>Immunogen</b>	Synthetic peptide encompassing a sequence within the Intracellular domain of human BAI1. The exact sequence is proprietary.
<b>Purification</b>	Affinity purified by Protein A.
<b>Conjugation</b>	Unconjugated

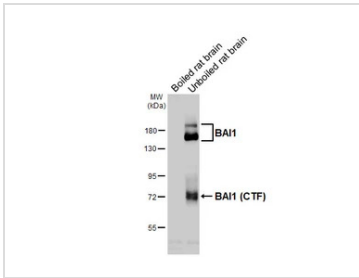
### Note

For laboratory research use only. Not for any clinical, therapeutic, or diagnostic use in humans or animals. Not for animal or human consumption.

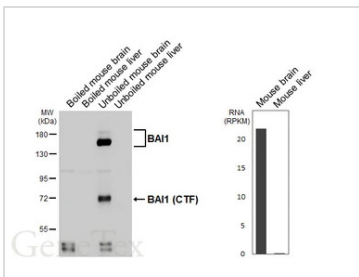
Purchasers shall not, and agree not to enable third parties to, analyze, copy, reverse engineer or otherwise attempt to determine the structure or sequence of the product.



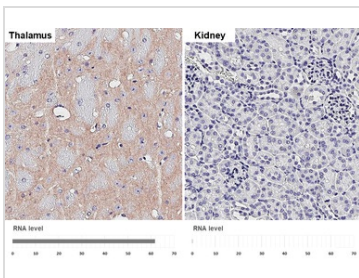
For full product information, images and publications, please visit our [website](#).

**DATA IMAGES**

**GTX643004 WB Image**

Boiled and unboiled rat tissue extracts (50 µg) were separated by 7.5% SDS-PAGE, and the membrane was blotted with BAI1 antibody [HL4190] (GTX643004) diluted at 1:1000. The HRP-conjugated anti-rabbit IgG antibody (GTX213110-01) was used to detect the primary antibody.


**GTX643004 WB Image**

Boiled and unboiled mouse tissue extracts (50 µg) were separated by 7.5% SDS-PAGE, and the membrane was blotted with BAI1 antibody [HL4190] (GTX643004) diluted at 1:1000. The HRP-conjugated anti-rabbit IgG antibody (GTX213110-01) was used to detect the primary antibody. Corresponding RNA expression data are based on NCBI database.


**GTX643004 IHC-P Image**

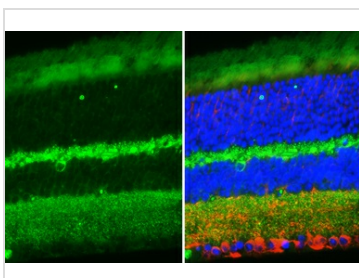
BAI1 antibody [HL4190] detects BAI1 protein by immunohistochemical analysis.

Sample: Paraffin-embedded mouse tissues.

BAI1 stained by BAI1 antibody [HL4190] (GTX643004) diluted at 1:200.

Antigen Retrieval: Citrate buffer, pH 6.0, 15 min

Corresponding RNA levels (RPKM) in the tissues are based on NCBI database.


**GTX643004 IHC-P Image**

BAI1 antibody [HL4190] detects BAI1 protein by immunohistochemical analysis.

Sample: Paraffin-embedded mouse eye.

Green: BAI1 stained by BAI1 antibody [HL4190] (GTX643004) diluted at 1:200.

Red: beta Tubulin 3/ Tuj1 antibody [GT11710] (GTX631836) diluted at 1:500.

Blue: Fluoroshield with DAPI (GTX30920).

Antigen Retrieval: Citrate buffer, pH 6.0, 15 min



For full product information, images and publications, please visit our [website](https://www.genetex.com).