

## KCNG4 antibody [HL4218]

**Cat. No. GTX643040**

<b>Host</b>	Rabbit
<b>Clonality</b>	Monoclonal
<b>Isotype</b>	IgG
<b>Applications</b>	WB
<b>Reactivity</b>	Mouse

**Package**  
100 µl, 25 µl

## Applications

**Application Note**

\*Optimal dilutions/concentrations should be determined by the researcher.

Suggested dilution	Recommended dilution
WB	1:500-1:3000

Not tested in other applications.

**Observed MW (kDa)** 59 kDa.

**Product Note** This antibody was raised against human KCNG4 Intracellular domain.

## Properties

**Form** Liquid

**Buffer** PBS

**Preservative** No preservatives

**Storage** Store as concentrated solution. Centrifuge briefly prior to opening vial. For short-term storage (1-2 weeks), store at 4°C. For long-term storage, aliquot and store at -20°C or below. Avoid multiple freeze-thaw cycles.

**Concentration** 1 mg/ml

**Immunogen** Recombinant protein encompassing a sequence within the Intracellular domain of human KCNG4. The exact sequence is proprietary.

**Purification** Affinity purified by Protein A.

**Conjugation** Unconjugated

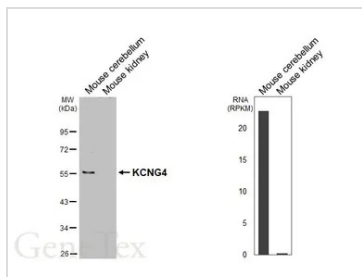
**Note** For laboratory research use only. Not for any clinical, therapeutic, or diagnostic use in humans or animals. Not for animal or human consumption.

Purchasers shall not, and agree not to enable third parties to, analyze, copy, reverse engineer or otherwise attempt to determine the structure or sequence of the product.



For full product information, images and publications, please visit our [website](#).

## DATA IMAGES

**GTX643040 WB Image**

Various mouse tissue extracts (50  $\mu$ g) were separated by 10% SDS-PAGE, and the membrane was blotted with KCNG4 antibody [HL4218] (GTX643040) diluted at 1:1000. The HRP-conjugated anti-rabbit IgG antibody (GTX213110-01) was used to detect the primary antibody. Corresponding RNA expression data are based on NCBI database.



For full product information, images and publications, please visit our [website](#).