

SLC25A1 antibody [HL4228]

Cat. No. GTX643061

Host	Rabbit
Clonality	Monoclonal
Isotype	IgG
Applications	WB, ICC/IF, IHC-P
Reactivity	Human

Package
100 µl, 25 µl

Applications

Application Note

*Optimal dilutions/concentrations should be determined by the researcher.

Suggested dilution	Recommended dilution
WB	1:500-1:3000
ICC/IF	Assay dependent
IHC-P	Assay dependent

Not tested in other applications.

Observed MW (kDa) 28 kDa.

Properties

Form	Liquid
Buffer	PBS
Preservative	No preservatives
Storage	Store as concentrated solution. Centrifuge briefly prior to opening vial. For short-term storage (1-2 weeks), store at 4°C. For long-term storage, aliquot and store at -20°C or below. Avoid multiple freeze-thaw cycles.
Concentration	1 mg/ml
Immunogen	Recombinant fragment of human SLC25A1.
Purification	Affinity purified by Protein A.
Conjugation	Unconjugated

Note

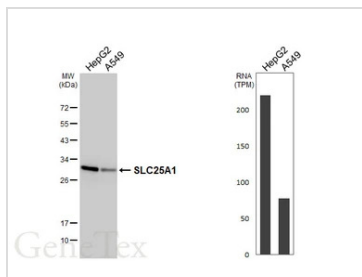
For laboratory research use only. Not for any clinical, therapeutic, or diagnostic use in humans or animals. Not for animal or human consumption.

Purchasers shall not, and agree not to enable third parties to, analyze, copy, reverse engineer or otherwise attempt to determine the structure or sequence of the product.

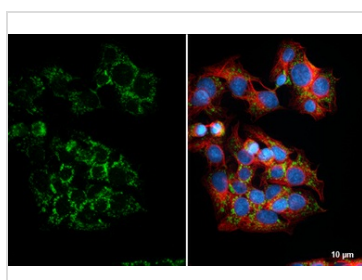


For full product information, images and publications, please visit our [website](#).

DATA IMAGES

**GTX643061 WB Image**

Various whole cell extracts (30 μ g) were separated by 12% SDS-PAGE, and the membrane was blotted with SLC25A1 antibody [HL4228] (GTX643061) diluted at 1:1000. The HRP-conjugated anti-rabbit IgG antibody (GTX213110-01) was used to detect the primary antibody. Corresponding RNA expression data are based on Human Protein Atlas program.

**GTX643061 ICC/IF Image**

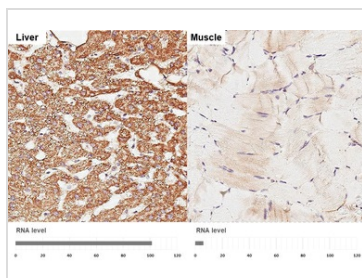
SLC25A1 antibody [HL4228] detects SLC25A1 protein by immunofluorescent analysis.

Sample: HepG2 cells were fixed in ice-cold MeOH for 5 min.

Green: SLC25A1 stained by SLC25A1 antibody [HL4228] (GTX643061) diluted at 1:500.

Red: alpha Tubulin, a cytoskeleton marker, stained by alpha Tubulin antibody [GT114] (GTX628802) diluted at 1:1000.

Blue: Fluoroshield with DAPI (GTX30920).

**GTX643061 IHC-P Image**

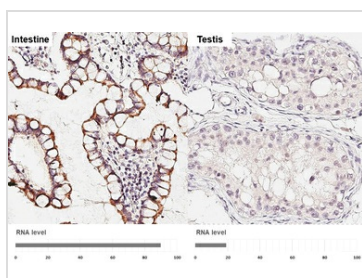
SLC25A1 antibody [HL4228] detects SLC25A1 protein by immunohistochemical analysis.

Sample: Paraffin-embedded human tissues.

SLC25A1 stained by SLC25A1 antibody [HL4228] (GTX643061) diluted at 1:200.

Antigen Retrieval: Tris-EDTA buffer, pH 9.0, 15 min

Corresponding RNA levels (nTPM) in the tissues are based on Human Protein Atlas program.

**GTX643061 IHC-P Image**

SLC25A1 antibody [HL4228] detects SLC25A1 protein by immunohistochemical analysis.

Sample: Paraffin-embedded human tissues.

SLC25A1 stained by SLC25A1 antibody [HL4228] (GTX643061) diluted at 1:200.

Antigen Retrieval: Tris-EDTA buffer, pH 9.0, 15 min

Corresponding RNA levels (nTPM) in the tissues are based on Human Protein Atlas program.



For full product information, images and publications, please visit our [website](#).