

FAK (phospho Tyr407) antibody [HL4231]

Cat. No. GTX643064

Host	Rabbit
Clonality	Monoclonal
Isotype	IgG
Applications	WB
Reactivity	Human, Mouse

Package
100 µl, 25 µl

Applications

Application Note

*Optimal dilutions/concentrations should be determined by the researcher.

Suggested dilution **Recommended dilution**

WB 1:500-1:3000

Not tested in other applications.

Observed MW (kDa) 125 kDa.

Properties

Form Liquid**Buffer** PBS**Preservative** No preservatives**Storage** Store as concentrated solution. Centrifuge briefly prior to opening vial. For short-term storage (1-2 weeks), store at 4°C. For long-term storage, aliquot and store at -20°C or below. Avoid multiple freeze-thaw cycles.**Concentration** 1 mg/ml**Immunogen** Carrier-protein conjugated synthetic peptide surrounding phospho Tyr407 of human FAK. The exact sequence is proprietary.**Purification** Affinity purified by Protein A.**Conjugation** Unconjugated**Note**

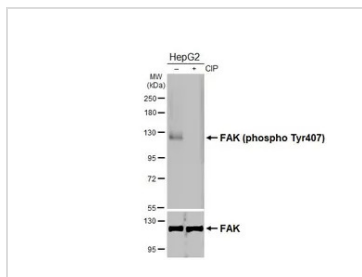
For laboratory research use only. Not for any clinical, therapeutic, or diagnostic use in humans or animals. Not for animal or human consumption.

Purchasers shall not, and agree not to enable third parties to, analyze, copy, reverse engineer or otherwise attempt to determine the structure or sequence of the product.

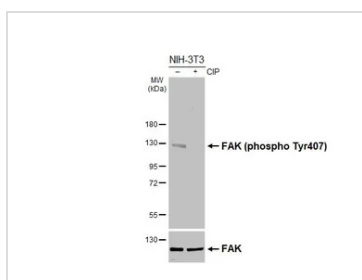


For full product information, images and publications, please visit our [website](#).

DATA IMAGES

**GTX643064 WB Image**

Untreated (-) and treated (+) HepG2 whole cell extracts (30 µg) were separated by 7.5% SDS-PAGE, and the membranes were blotted with FAK (phospho Tyr407) antibody [HL4231] (GTX643064) diluted at 1:1000 and Fak antibody (GTX100764) diluted at 1:1000. The HRP-conjugated anti-rabbit IgG antibody (GTX213110-01) was used to detect the primary antibody.

**GTX643064 WB Image**

Untreated (-) and treated (+) NHI-3T3 whole cell extracts (30 µg) were separated by 7.5% SDS-PAGE, and the membranes were blotted with FAK (phospho Tyr407) antibody [HL4231] (GTX643064) diluted at 1:1000 and Fak antibody (GTX100764) diluted at 1:1000. The HRP-conjugated anti-rabbit IgG antibody (GTX213110-01) was used to detect the primary antibody.



For full product information, images and publications, please visit our [website](#).