

## FPRL1 antibody [HL4245]

**Cat. No. GTX643078**

<b>Host</b>	Rabbit
<b>Clonality</b>	Monoclonal
<b>Isotype</b>	IgG
<b>Applications</b>	ICC/IF
<b>Reactivity</b>	Human

**Package**  
100 µl, 25 µl

## Applications

**Application Note**

\*Optimal dilutions/concentrations should be determined by the researcher.

Suggested dilution	Recommended dilution
ICC/IF	1:100-1:1000

Not tested in other applications.

**Product Note** This antibody was raised against human FPRL1 Extracellular domain.

## Properties

<b>Form</b>	Liquid
<b>Buffer</b>	PBS
<b>Preservative</b>	No preservatives
<b>Storage</b>	Store as concentrated solution. Centrifuge briefly prior to opening vial. For short-term storage (1-2 weeks), store at 4°C. For long-term storage, aliquot and store at -20°C or below. Avoid multiple freeze-thaw cycles.
<b>Immunogen</b>	Synthetic peptide encompassing a sequence within the Extracellular domain of human FPRL1. The exact sequence is proprietary.
<b>Purification</b>	Affinity purified by Protein A.
<b>Conjugation</b>	Unconjugated

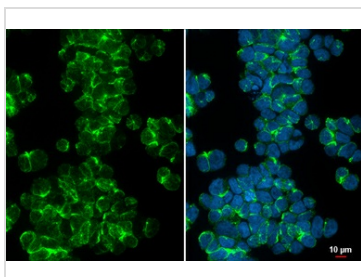
**Note** For laboratory research use only. Not for any clinical, therapeutic, or diagnostic use in humans or animals. Not for animal or human consumption.

Purchasers shall not, and agree not to enable third parties to, analyze, copy, reverse engineer or otherwise attempt to determine the structure or sequence of the product.



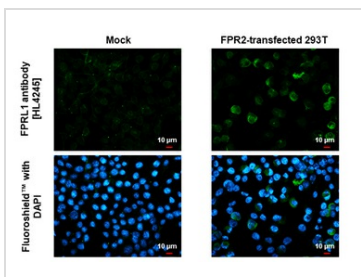
For full product information, images and publications, please visit our [website](#).

DATA IMAGES



**GTX643078 ICC/IF Image**

FPRL1 antibody [HL4245] detects FPRL1 protein by immunofluorescent analysis.  
 Sample: HL-60 cells were fixed in 4% paraformaldehyde at RT for 15 min.  
 Green: FPRL1 stained by FPRL1 antibody [HL4245] (GTX643078) diluted at 1:100.  
 Blue: Fluoroshield with DAPI (GTX30920).



**GTX643078 ICC/IF Image**

FPRL1 antibody [HL4245] detects FPRL1 protein by immunofluorescent analysis.  
 Sample: Mock and transfected 293T cells were fixed in ice-cold MeOH for 5 min.  
 Green: FPRL1 stained by FPRL1 antibody [HL4245] (GTX643078) diluted at 1:500.  
 Blue: Fluoroshield with DAPI (GTX30920).



For full product information, images and publications, please visit our [website](#).