

TLR4 antibody

Cat. No. GTX64330

Host	Rabbit
Clonality	Polyclonal
Isotype	IgG
Applications	WB, ICC/IF, Multiplexing
Reactivity	Human, Rat

References (1)

Package

100 µl

Applications

Application Note

*Optimal dilutions/concentrations should be determined by the researcher.

Suggested dilution	Recommended dilution
WB	1:500 - 1:2000
ICC/IF	1:50 - 1:200
Multiplexing	Assay dependent

Not tested in other applications.

Calculated MW 96 kDa. ([Note](#))

Properties

Form	Liquid
Buffer	PBS, 50% Glycerol
Preservative	0.02% Sodium azide
Storage	Store as concentrated solution. Centrifuge briefly prior to opening vial. For short-term storage (1-2 weeks), store at 4°C. For long-term storage, aliquot and store at -20°C or below. Avoid multiple freeze-thaw cycles.
Concentration	Batch dependent (Please refer to the vial label for the specific concentration.)
Immunogen	A synthetic peptide corresponding to a sequence within amino acids 500-600 of human TLR4 (NP_612564.1).
Purification	Purified by affinity chromatography
Conjugation	Unconjugated

Note

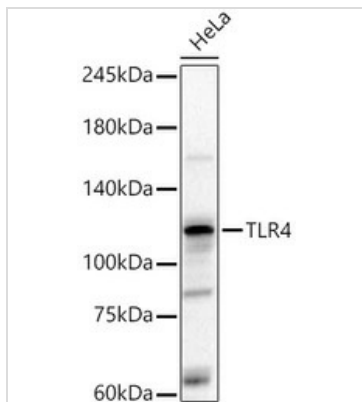
For laboratory research use only. Not for any clinical, therapeutic, or diagnostic use in humans or animals. Not for animal or human consumption.

Purchasers shall not, and agree not to enable third parties to, analyze, copy, reverse engineer or otherwise attempt to determine the structure or sequence of the product.



For full product information, images and publications, please visit our [website](#).

DATA IMAGES

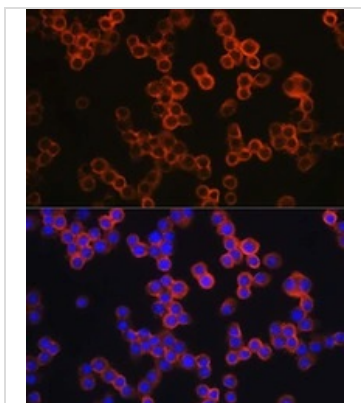


GTX64330 WB Image

WB analysis of HeLa cell lysates using GTX64330 TLR4 antibody.

Dilution : 1:2000

Loading : 25µg



GTX64330 ICC/IF Image

ICC/IF analysis of RAW264.7 cells using GTX64330 TLR4 antibody.

Orange : Primary antibody

Blue : DAPI

Dilution : 1:200



For full product information, images and publications, please visit our [website](#).