

TSG101 antibody

Cat. No. GTX64349

Host	Rabbit
Clonality	Polyclonal
Isotype	IgG
Applications	WB, IHC-P, IP
Reactivity	Human, Mouse, Rat

References (1)

Package

100 µl

Applications

Application Note

*Optimal dilutions/concentrations should be determined by the researcher.

Suggested dilution	Recommended dilution
WB	1:500 - 1:2000
IHC-P	1:50 - 1:100
IP	1:50 - 1:200

Not tested in other applications.

Calculated MW 44 kDa. ([Note](#))

Properties

Form	Liquid
Buffer	PBS, 50% Glycerol
Preservative	0.09% Sodium azide
Storage	Store as concentrated solution. Centrifuge briefly prior to opening vial. For short-term storage (1-2 weeks), store at 4°C. For long-term storage, aliquot and store at -20°C or below. Avoid multiple freeze-thaw cycles.
Concentration	Batch dependent (Please refer to the vial label for the specific concentration.)
Immunogen	A synthetic peptide corresponding to a sequence within amino acids 300 to the C-terminus of human TSG101 (NP_006283.1).
Purification	Purified by affinity chromatography
Conjugation	Unconjugated

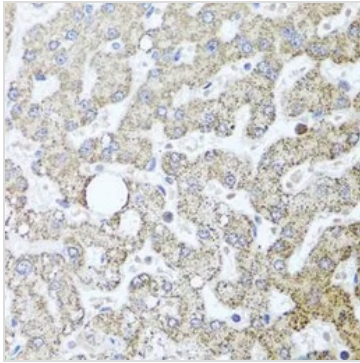
Note

For laboratory research use only. Not for any clinical, therapeutic, or diagnostic use in humans or animals. Not for animal or human consumption.

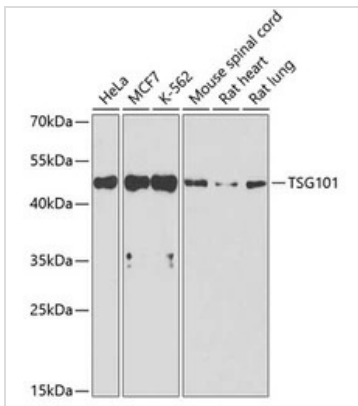
Purchasers shall not, and agree not to enable third parties to, analyze, copy, reverse engineer or otherwise attempt to determine the structure or sequence of the product.



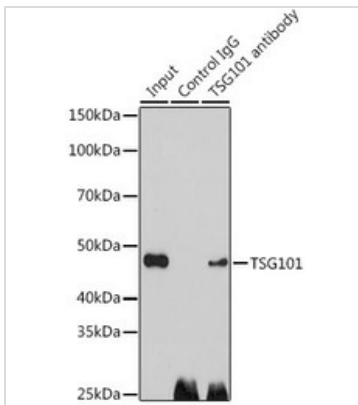
For full product information, images and publications, please visit our [website](#).

DATA IMAGES

GTX64349 IHC-P Image

IHC-P analysis of human liver damage tissue using GTX64349 TSG101 antibody.
Dilution : 1:100


GTX64349 WB Image

WB analysis of various sample lysates using GTX64349 TSG101 antibody.
Dilution : 1:1000
Loading : 25µg per lane


GTX64349 IP Image

IP analysis of HeLa cell lysate using GTX64349 TSG101 antibody.
Antibody amount : 3µg / 200µg lysate
Dilution : 1:1000



For full product information, images and publications, please visit our [website](https://www.genetex.com).