

IRF3 antibody

Cat. No. GTX64358

Host	Rabbit
Clonality	Polyclonal
Isotype	IgG
Applications	WB, IHC-P, ChIP assay
Reactivity	Human

Package
100 µl

Applications

Application Note

*Optimal dilutions/concentrations should be determined by the researcher.

Suggested dilution	Recommended dilution
WB	1:500 - 1:2000
IHC-P	1:50 - 1:200
ChIP assay	1:20 - 1:100

Not tested in other applications.

Calculated MW 47 kDa. ([Note](#))

Properties

Form	Liquid
Buffer	PBS, 50% Glycerol
Preservative	0.02% Sodium azide
Storage	Store as concentrated solution. Centrifuge briefly prior to opening vial. For short-term storage (1-2 weeks), store at 4°C. For long-term storage, aliquot and store at -20°C or below. Avoid multiple freeze-thaw cycles.
Concentration	Batch dependent (Please refer to the vial label for the specific concentration.)
Immunogen	Recombinant fusion protein containing a sequence corresponding to amino acids 1-260 of human IRF3 (NP_001184051.1).
Purification	Purified by affinity chromatography
Conjugation	Unconjugated

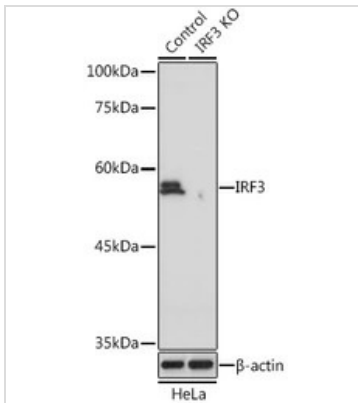
Note

For laboratory research use only. Not for any clinical, therapeutic, or diagnostic use in humans or animals. Not for animal or human consumption.

Purchasers shall not, and agree not to enable third parties to, analyze, copy, reverse engineer or otherwise attempt to determine the structure or sequence of the product.



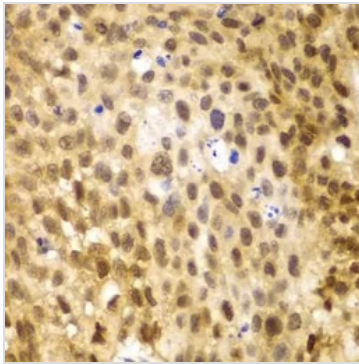
For full product information, images and publications, please visit our [website](#).

DATA IMAGES

GTX64358 WB Image

WB analysis of normal (control) and knockout (KO) HeLa cell lysate using GTX64358 IRF3 antibody.

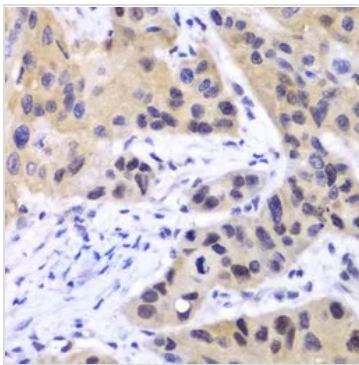
Dilution : 1:1000

Loading : 25μg per lane


GTX64358 IHC-P Image

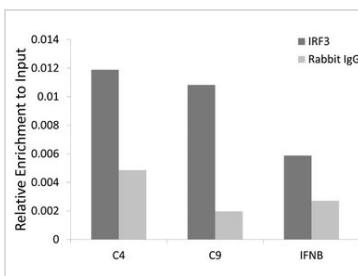
IHC-P analysis of human lung cancer tissue using GTX64358 IRF3 antibody.

Dilution : 1:100


GTX64358 IHC-P Image

IHC-P analysis of human esophageal cancer tissue using GTX64358 IRF3 antibody.

Dilution : 1:100


GTX64358 ChIP assay Image

ChIP analysis of HCT116 cell lysate using GTX64358 IRF3 antibody. The amount of immunoprecipitated DNA was checked by quantitative PCR. Histogram was constructed by the ratios of the immunoprecipitated DNA to the input.



For full product information, images and publications, please visit our [website](http://www.genetex.com).