

Ku70 antibody

Cat. No. GTX64359

Host	Rabbit
Clonality	Polyclonal
Isotype	IgG
Applications	WB, ICC/IF, IHC-P, IP
Reactivity	Human, Mouse, Rat, Monkey

Package
100 µl

Applications

Application Note

*Optimal dilutions/concentrations should be determined by the researcher.

Suggested dilution	Recommended dilution
WB	1:500 - 1:2000
ICC/IF	1:50 - 1:100
IHC-P	1:50 - 1:100
IP	1:20 - 1:50

Not tested in other applications.

Calculated MW 70 kDa. ([Note](#))

Properties

Form	Liquid
Buffer	PBS, 50% Glycerol
Preservative	0.02% Sodium azide
Storage	Store as concentrated solution. Centrifuge briefly prior to opening vial. For short-term storage (1-2 weeks), store at 4°C. For long-term storage, aliquot and store at -20°C or below. Avoid multiple freeze-thaw cycles.
Concentration	Batch dependent (Please refer to the vial label for the specific concentration.)
Immunogen	Recombinant fusion protein containing a sequence corresponding to amino acids 408-609 of human XRCC6 (NP_001460.1).
Purification	Purified by affinity chromatography
Conjugation	Unconjugated



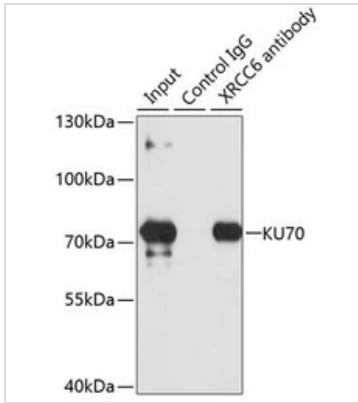
For full product information, images and publications, please visit our [website](#).

For laboratory research use only. Not for any clinical, therapeutic, or diagnostic use in humans or animals. Not for animal or human consumption.

Note

Purchasers shall not, and agree not to enable third parties to, analyze, copy, reverse engineer or otherwise attempt to determine the structure or sequence of the product.

DATA IMAGES

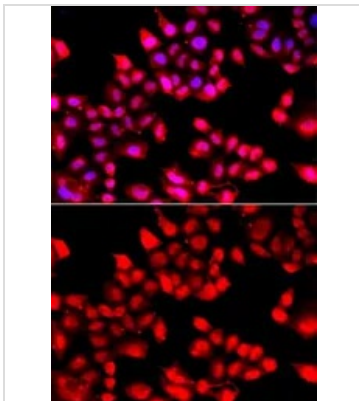


GTX64359 IP Image

IP analysis of SW480 cell lysate using GTX64359 Ku70 antibody.

Antibody amount : 3 μ g / 100 μ g lysate

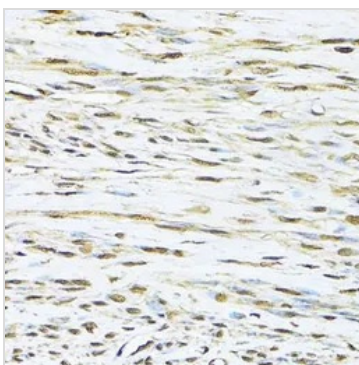
Dilution : 1:1000



GTX64359 ICC/IF Image

ICC/IF analysis of A549 cells using GTX64359 Ku70 antibody.

Blue : DAPI



GTX64359 IHC-P Image

IHC-P analysis of human uterus tissue using GTX64359 Ku70 antibody.

Dilution : 1:100



For full product information, images and publications, please visit our [website](#).