

## DNMT1 antibody

Cat. No. GTX64361

Host	Rabbit
Clonality	Polyclonal
Isotype	IgG
Applications	WB, ICC/IF, IP
Reactivity	Human

Package  
100 µl

## Applications

## Application Note

\*Optimal dilutions/concentrations should be determined by the researcher.

Suggested dilution	Recommended dilution
WB	1:500 - 1:2000
ICC/IF	1:50 - 1:200
IP	1:50 - 1:100

Not tested in other applications.

Calculated MW 183 kDa. ([Note](#))

## Properties

Form	Liquid
Buffer	PBS, 50% Glycerol
Preservative	0.02% Sodium azide
Storage	Store as concentrated solution. Centrifuge briefly prior to opening vial. For short-term storage (1-2 weeks), store at 4°C. For long-term storage, aliquot and store at -20°C or below. Avoid multiple freeze-thaw cycles.
Concentration	Batch dependent (Please refer to the vial label for the specific concentration.)
Immunogen	Recombinant fusion protein containing a sequence corresponding to amino acids 1-270 of human DNMT1 (NP_001370.1).
Purification	Purified by affinity chromatography
Conjugation	Unconjugated

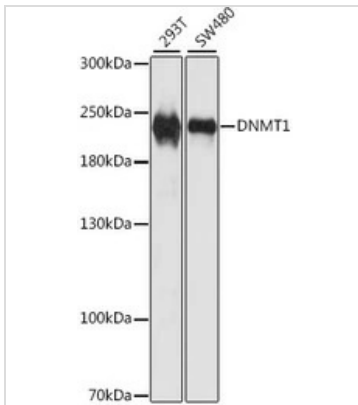
## Note

For laboratory research use only. Not for any clinical, therapeutic, or diagnostic use in humans or animals. Not for animal or human consumption.

Purchasers shall not, and agree not to enable third parties to, analyze, copy, reverse engineer or otherwise attempt to determine the structure or sequence of the product.



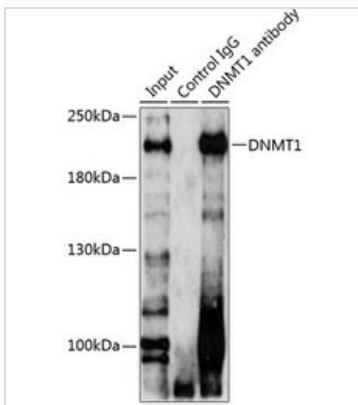
For full product information, images and publications, please visit our [website](#).

**DATA IMAGES**

**GTX64361 WB Image**

WB analysis of various sample lysates using GTX64361 DNMT1 antibody.

Dilution : 1:1000

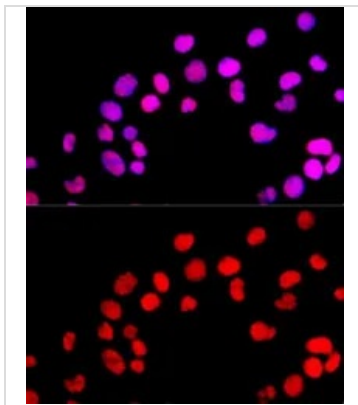
Loading : 25µg per lane


**GTX64361 IP Image**

IP analysis of 293T cell lysate using GTX64361 DNMT1 antibody.

Antibody amount : 3µg / 200µg lysate

Dilution : 1:1000


**GTX64361 ICC/IF Image**

ICC/IF analysis of 293T cells using GTX64361 DNMT1 antibody.

Blue : DAPI

Dilution : 1:100



For full product information, images and publications, please visit our [website](https://www.genetex.com).