

Claudin 18.2 antibody [GT206]

Cat. No. GTX643617

Host	Mouse
Clonality	Monoclonal
Isotype	IgG2a
Applications	IHC-P, IHC-P (cell pellet)
Reactivity	Human, Mouse

Package
100 µl, 25 µl

Applications

Application Note

*Optimal dilutions/concentrations should be determined by the researcher.

Suggested dilution	Recommended dilution
IHC-P	Assay dependent
IHC-P (cell pellet)	Assay dependent

Not tested in other applications.

Properties

Form	Liquid
Buffer	PBS
Preservative	No preservatives
Storage	Store as concentrated solution. Centrifuge briefly prior to opening vial. For short-term storage (1-2 weeks), store at 4°C. For long-term storage, aliquot and store at -20°C or below. Avoid multiple freeze-thaw cycles.
Concentration	1 mg/ml (Please refer to the vial label for the specific concentration.)
Immunogen	Recombinant fragment of human Claudin 18.2.
Purification	Affinity purified by Protein A.
Conjugation	Unconjugated

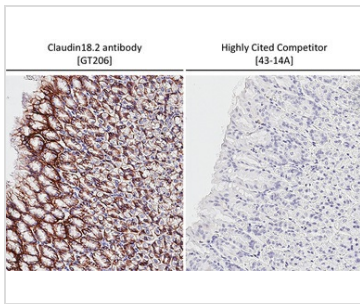
Note

For laboratory research use only. Not for any clinical, therapeutic, or diagnostic use in humans or animals. Not for animal or human consumption.

Purchasers shall not, and agree not to enable third parties to, analyze, copy, reverse engineer or otherwise attempt to determine the structure or sequence of the product.



For full product information, images and publications, please visit our [website](#).

DATA IMAGES

GTX643617 IHC-P Image

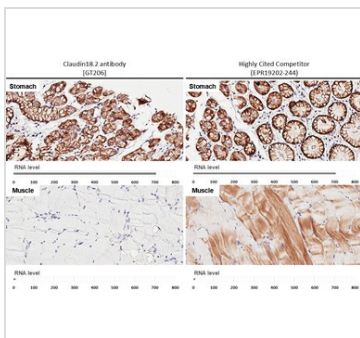
Claudin18.2 antibody [GT206] detects Claudin18.2 protein by immunohistochemical analysis.

Sample: Paraffin-embedded mouse stomach.

Claudin18.2 stained by Claudin18.2 antibody [GT206] (GTX643617) diluted at 1:500 and highly cited competitor's antibody diluted at 1:7500.

Antigen Retrieval: Tris-EDTA buffer, pH 9.0, 15 min

*Competitor's antibody is not affiliated with GeneTex and does not endorse this product.


GTX643617 IHC-P Image

Claudin18.2 antibody [GT206] detects Claudin18.2 protein by immunohistochemical analysis.

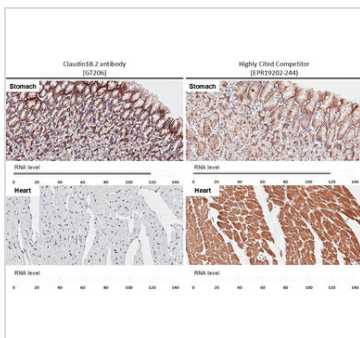
Sample: Paraffin-embedded human tissues.

Claudin18.2 stained by Claudin18.2 antibody [GT206] (GTX643617) diluted at 1:500 and highly cited competitor's antibody diluted at 1:1000.

Antigen Retrieval: Tris-EDTA buffer, pH 9.0, 15 min

*Competitor's antibody is not affiliated with GeneTex and does not endorse this product.

Corresponding RNA levels (nTPM) in the tissues are based on Human Protein Atlas program.


GTX643617 IHC-P Image

Claudin18.2 antibody [GT206] detects Claudin18.2 protein by immunohistochemical analysis.

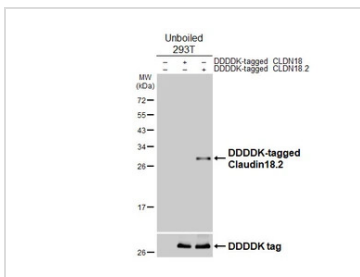
Sample: Paraffin-embedded mouse tissues.

Claudin18.2 stained by Claudin18.2 antibody [GT206] (GTX643617) diluted at 1:500 and highly cited competitor's antibody diluted at 1:1000.

Antigen Retrieval: Tris-EDTA buffer, pH 9.0, 15 min

*Competitor's antibody is not affiliated with GeneTex and does not endorse this product.

Corresponding RNA levels (RPKM) in the tissues are based on NCBI database.


GTX643617 Image

Non-transfected (-) and transfected (+) unboiled 293T whole cell extracts (30 µg) were separated by 12% SDS-PAGE, and the membrane was blotted with Claudin 18.2 antibody [GT206] (GTX643617) diluted at 1:5000. The HRP-conjugated anti-mouse IgG antibody (GTX213111-01) was used to detect the primary antibody.



For full product information, images and publications, please visit our [website](https://www.genetex.com).