

S1PR5 / EDG8 antibody [HL4439]

Cat. No. GTX643728

Host	Rabbit
Clonality	Monoclonal
Isotype	IgG
Applications	WB, ICC/IF
Reactivity	Human

Package
100 µl, 25 µl

Applications

Application Note

*Optimal dilutions/concentrations should be determined by the researcher.

Suggested dilution	Recommended dilution
WB	1:5000-1:150000
ICC/IF	Assay dependent

Not tested in other applications.

Observed MW (kDa) 30-53 kDa.

Product Note This antibody was raised against human S1PR5 / EDG8 Intracellular domain.

Properties

Form	Liquid
Buffer	PBS
Preservative	No preservatives
Storage	Store as concentrated solution. Centrifuge briefly prior to opening vial. For short-term storage (1-2 weeks), store at 4°C. For long-term storage, aliquot and store at -20°C or below. Avoid multiple freeze-thaw cycles.
Concentration	1 mg/ml (Please refer to the vial label for the specific concentration.)
Immunogen	Synthetic peptide encompassing a sequence within the Intracellular domain of human S1PR5 / EDG8. The exact sequence is proprietary.
Purification	Affinity purified by Protein A.
Conjugation	Unconjugated

Note

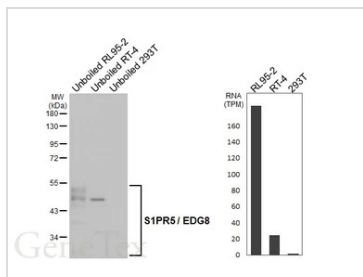
For laboratory research use only. Not for any clinical, therapeutic, or diagnostic use in humans or animals. Not for animal or human consumption.

Purchasers shall not, and agree not to enable third parties to, analyze, copy, reverse engineer or otherwise attempt to determine the structure or sequence of the product.



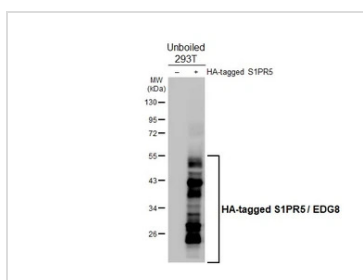
For full product information, images and publications, please visit our [website](#).

DATA IMAGES



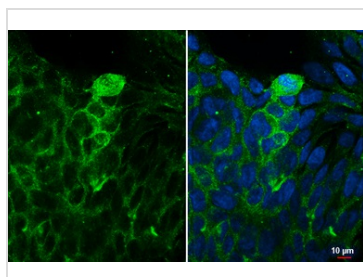
GTX643728 WB Image

Unboiled various whole cell extracts (30 µg) were separated by 10% SDS-PAGE, and the membrane was blotted with S1PR5 / EDG8 antibody [HL4439] (GTX643728) diluted at 1:1000. The HRP-conjugated anti-rabbit IgG antibody (GTX213110-01) was used to detect the primary antibody, and the signal was developed with Trident ECL plus-Enhanced. Corresponding RNA expression data are based on Human Protein Atlas program.



GTX643728 WB Image

Non-transfected (-) and transfected (+) unboiled 293T whole cell extracts (30 µg) were separated by 10% SDS-PAGE, and the membrane was blotted with S1PR5 / EDG8 antibody [HL4439] (GTX643728) diluted at 1:150000. The HRP-conjugated anti-rabbit IgG antibody (GTX213110-01) was used to detect the primary antibody.



GTX643728 ICC/IF Image

S1PR5 / EDG8 antibody [HL4439] detects S1PR5 / EDG8 protein by immunofluorescent analysis. Sample: RT-4 cells were fixed in 4% paraformaldehyde at RT for 15 min. Green: S1PR5 / EDG8 stained by S1PR5 / EDG8 antibody [HL4439] (GTX643728) diluted at 1:500. Blue: Fluoroshield with DAPI (GTX30920).



For full product information, images and publications, please visit our [website](#).