

## FSH Receptor antibody

Cat. No. GTX64391

Host	Rabbit
Clonality	Polyclonal
Isotype	IgG
Applications	WB, ICC/IF, IHC-P
Reactivity	Human, Mouse, Rat

References ( 1 )

Package

100 µl

## Applications

## Application Note

\*Optimal dilutions/concentrations should be determined by the researcher.

Suggested dilution	Recommended dilution
WB	1:500 - 1:2000
ICC/IF	1:50 - 1:200
IHC-P	Assay dependent

Not tested in other applications.

Calculated MW 78 kDa. ( [Note](#) )

## Properties

Form	Liquid
Buffer	PBS, 50% Glycerol
Preservative	0.02% Sodium azide
Storage	Store as concentrated solution. Centrifuge briefly prior to opening vial. For short-term storage (1-2 weeks), store at 4°C. For long-term storage, aliquot and store at -20°C or below. Avoid multiple freeze-thaw cycles.
Concentration	Batch dependent (Please refer to the vial label for the specific concentration.)
Immunogen	Recombinant fusion protein containing a sequence corresponding to amino acids 631-695 of human FSHR (NP_000136.2).
Purification	Purified by affinity chromatography
Conjugation	Unconjugated

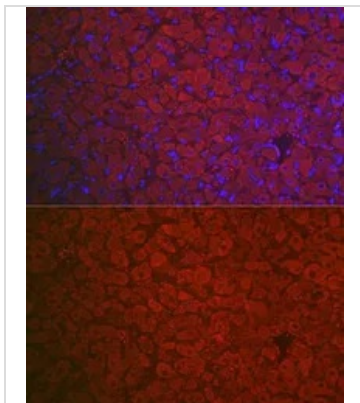
## Note

For laboratory research use only. Not for any clinical, therapeutic, or diagnostic use in humans or animals. Not for animal or human consumption.

Purchasers shall not, and agree not to enable third parties to, analyze, copy, reverse engineer or otherwise attempt to determine the structure or sequence of the product.



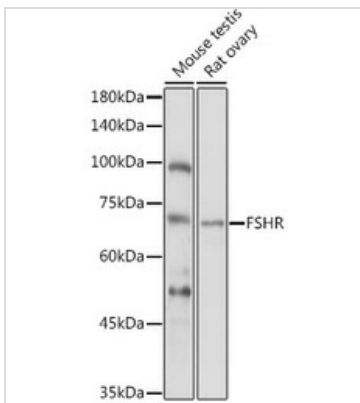
For full product information, images and publications, please visit our [website](#).

**DATA IMAGES**

**GTX64391 IHC-P Image**

IHC-P analysis of rat ovary tissue using GTX64391 FSH Receptor antibody.

Blue : DAPI

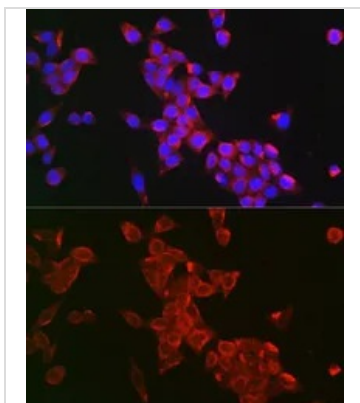
Dilution : 1:100


**GTX64391 WB Image**

WB analysis of various sample lysates using GTX64391 FSH Receptor antibody.

Dilution : 1:1000

Loading : 25µg per lane


**GTX64391 ICC/IF Image**

ICC/IF analysis of HeLa cells using GTX64391 FSH Receptor antibody.

Blue : DAPI

Dilution : 1:100



For full product information, images and publications, please visit our [website](https://www.genetex.com).