

# alpha 1b Adrenergic Receptor antibody [HL4479]

**Cat. No. GTX644046**

<b>Host</b>	Rabbit
<b>Clonality</b>	Monoclonal
<b>Isotype</b>	IgG
<b>Applications</b>	WB
<b>Reactivity</b>	Human, Mouse, Rat

**Package**  
100 µl, 25 µl

## Applications

### Application Note

\*Optimal dilutions/concentrations should be determined by the researcher.

Suggested dilution	Recommended dilution
WB	1:500-1:10000

Not tested in other applications.

**Observed MW (kDa)** 45-60 kDa.

**Product Note** This antibody was raised against human alpha 1b Adrenergic Receptor Intracellular domain.

## Properties

<b>Form</b>	Liquid
<b>Buffer</b>	PBS
<b>Preservative</b>	No preservatives
<b>Storage</b>	Store as concentrated solution. Centrifuge briefly prior to opening vial. For short-term storage (1-2 weeks), store at 4°C. For long-term storage, aliquot and store at -20°C or below. Avoid multiple freeze-thaw cycles.
<b>Concentration</b>	batch dependent (Please refer to the vial label for the specific concentration.)
<b>Immunogen</b>	Synthetic peptide encompassing a sequence within the Intracellular domain of human alpha 1b Adrenergic Receptor. The exact sequence is proprietary.
<b>Purification</b>	Affinity purified by Protein A.
<b>Conjugation</b>	Unconjugated

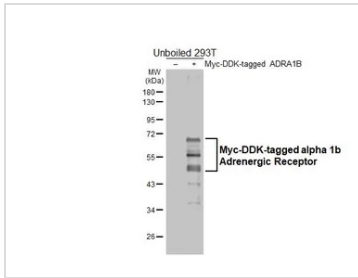
**Note** For laboratory research use only. Not for any clinical, therapeutic, or diagnostic use in humans or animals. Not for animal or human consumption.

Purchasers shall not, and agree not to enable third parties to, analyze, copy, reverse engineer or otherwise attempt to determine the structure or sequence of the product.



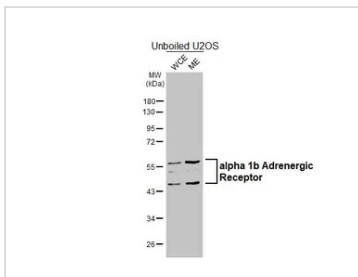
For full product information, images and publications, please visit our [website](#).

DATA IMAGES



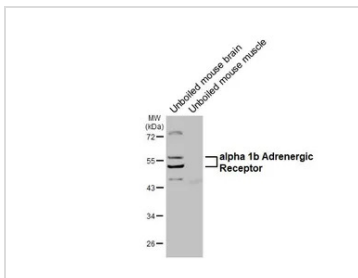
**GTX644046 WB Image**

Non-transfected (–) and transfected (+) unboiled 293T whole cell extracts (30 µg) were separated by 10% SDS-PAGE, and the membrane was blotted with alpha 1b Adrenergic Receptor antibody [HL4479] (GTX644046) diluted at 1:5000. The HRP-conjugated anti-rabbit IgG antibody (GTX213110-01) was used to detect the primary antibody.



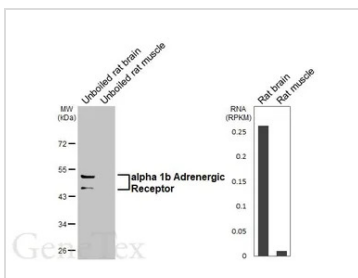
**GTX644046 WB Image**

Unboiled U2OS whole cell and membrane extracts (30 µg) were separated by 10% SDS-PAGE, and the membrane was blotted with alpha 1b Adrenergic Receptor antibody [HL4479] (GTX644046) diluted at 1:1000. The HRP-conjugated anti-rabbit IgG antibody (GTX213110-01) was used to detect the primary antibody, and the signal was developed with Trident ECL plus-Enhanced. (WCE: whole cell extract; ME: membrane extract)



**GTX644046 WB Image**

Unboiled various tissue extracts (50 µg) were separated by 10% SDS-PAGE, and the membrane was blotted with alpha 1b Adrenergic Receptor antibody [HL4479] (GTX644046) diluted at 1:1000. The HRP-conjugated anti-rabbit IgG antibody (GTX213110-01) was used to detect the primary antibody.



**GTX644046 WB Image**

Unboiled various tissue extracts (50 µg) were separated by 10% SDS-PAGE, and the membrane was blotted with alpha 1b Adrenergic Receptor antibody [HL4479] (GTX644046) diluted at 1:1000. The HRP-conjugated anti-rabbit IgG antibody (GTX213110-01) was used to detect the primary antibody. Corresponding RNA expression data are based on NCBI database.



For full product information, images and publications, please visit our [website](https://www.genetex.com).