

Filamin B antibody

Cat. No. GTX64428

Host	Rabbit
Clonality	Polyclonal
Isotype	IgG
Applications	WB, ICC/IF, IHC-P
Reactivity	Human, Mouse, Rat

Package
100 µl

Applications

Application Note

*Optimal dilutions/concentrations should be determined by the researcher.

Suggested dilution	Recommended dilution
WB	1:500 - 1:1000
ICC/IF	1:20 - 1:100
IHC-P	1:50 - 1:100

Not tested in other applications.

Calculated MW 278 kDa. ([Note](#))

Properties

Form	Liquid
Buffer	PBS, 50% Glycerol
Preservative	0.02% Sodium azide
Storage	Store as concentrated solution. Centrifuge briefly prior to opening vial. For short-term storage (1-2 weeks), store at 4°C. For long-term storage, aliquot and store at -20°C or below. Avoid multiple freeze-thaw cycles.
Concentration	Batch dependent (Please refer to the vial label for the specific concentration.)
Immunogen	Recombinant fusion protein containing a sequence corresponding to amino acids 1686-1785 of human FLNB (NP_001157789.1).
Purification	Purified by affinity chromatography
Conjugation	Unconjugated

Note

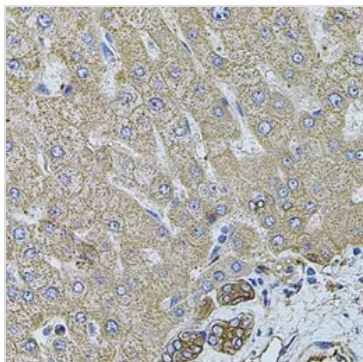
For laboratory research use only. Not for any clinical, therapeutic, or diagnostic use in humans or animals. Not for animal or human consumption.

Purchasers shall not, and agree not to enable third parties to, analyze, copy, reverse engineer or otherwise attempt to determine the structure or sequence of the product.



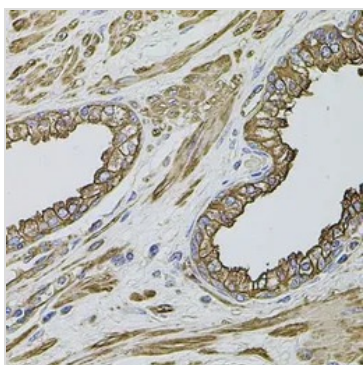
For full product information, images and publications, please visit our [website](#).

DATA IMAGES



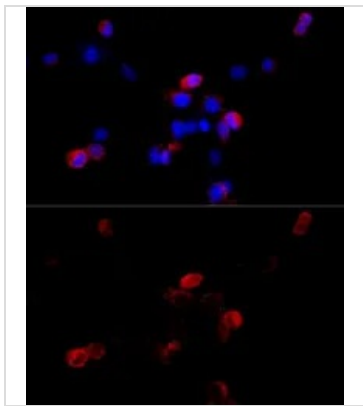
GTX64428 IHC-P Image

IHC-P analysis of human liver damage tissue using GTX64428 Filamin B antibody.
Dilution : 1:100



GTX64428 IHC-P Image

IHC-P analysis of human prostate tissue using GTX64428 Filamin B antibody.
Dilution : 1:100



GTX64428 ICC/IF Image

ICC/IF analysis of HeLa cells using GTX64428 Filamin B antibody.
Blue : DAPI
Dilution : 1:100



For full product information, images and publications, please visit our [website](https://www.genetex.com).