

GPR148 antibody [HL4630]

Cat. No. GTX644494

Host	Rabbit
Clonality	Monoclonal
Isotype	IgG
Applications	WB, ICC/IF
Reactivity	Human

Package
100 µl, 25 µl

Applications

Application Note

*Optimal dilutions/concentrations should be determined by the researcher.

Suggested dilution	Recommended dilution
WB	1:1000-1:10000
ICC/IF	Assay dependent

Not tested in other applications.

Product Note This antibody was raised against human GPR148 Extracellular domain.

Properties

Form	Liquid
Buffer	PBS
Preservative	No preservatives
Storage	Store as concentrated solution. Centrifuge briefly prior to opening vial. For short-term storage (1-2 weeks), store at 4°C. For long-term storage, aliquot and store at -20°C or below. Avoid multiple freeze-thaw cycles.
Concentration	1 mg/ml (Please refer to the vial label for the specific concentration.)
Immunogen	Synthetic peptide encompassing a sequence within the Extracellular domain of human GPR148. The exact sequence is proprietary.
Purification	Affinity purified by Protein A.
Conjugation	Unconjugated

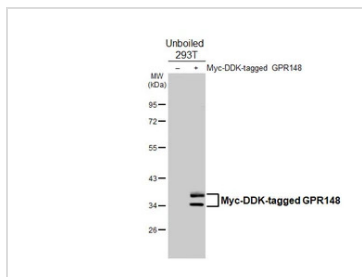
Note For laboratory research use only. Not for any clinical, therapeutic, or diagnostic use in humans or animals. Not for animal or human consumption.

Purchasers shall not, and agree not to enable third parties to, analyze, copy, reverse engineer or otherwise attempt to determine the structure or sequence of the product.



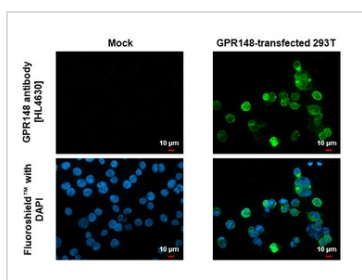
For full product information, images and publications, please visit our [website](#).

DATA IMAGES



GTX644494 WB Image

Non-transfected (-) and transfected (+) unboiled 293T whole cell extracts (30 µg) were separated by 10% SDS-PAGE, and the membrane was blotted with GPR148 antibody [HL4630] (GTX644494) diluted at 1:5000. The HRP-conjugated anti-rabbit IgG antibody (GTX213110-01) was used to detect the primary antibody.



GTX644494 ICC/IF Image

GPR148 antibody [HL4630] detects GPR148 protein by immunofluorescent analysis. Sample: Mock and transfected 293T cells were fixed in 4% paraformaldehyde at RT for 15 min. Green: GPR148 stained by GPR148 antibody [HL4630] (GTX644494) diluted at 1:500. Blue: Fluoroshield with DAPI (GTX30920).



For full product information, images and publications, please visit our [website](#).