

## 4E-BP1 (phospho Thr37/Thr46) antibody [HL4646]

**Cat. No. GTX644519**

<b>Host</b>	Rabbit
<b>Clonality</b>	Monoclonal
<b>Isotype</b>	IgG
<b>Applications</b>	WB
<b>Reactivity</b>	Human

**Package**  
100 µl, 25 µl

## Applications

**Application Note**

\*Optimal dilutions/concentrations should be determined by the researcher.

Suggested dilution	Recommended dilution
WB	1:500-1:3000

Not tested in other applications.

**Observed MW (kDa)** 18 kDa.

**Product Note** This antibody recognizes 4E-BP1 protein when dually phosphorylated at Thr37 and Thr46 or singly phosphorylated at Thr37 or Thr46.

## Properties

**Form** Liquid

**Buffer** PBS

**Preservative** No preservatives

**Storage** Store as concentrated solution. Centrifuge briefly prior to opening vial. For short-term storage (1-2 weeks), store at 4°C. For long-term storage, aliquot and store at -20°C or below. Avoid multiple freeze-thaw cycles.

**Concentration** 1 mg/ml (Please refer to the vial label for the specific concentration.)

**Immunogen** Carrier-protein conjugated synthetic peptide surrounding phospho Thr37/Thr46 of human 4E-BP1. The exact sequence is proprietary.

**Purification** Affinity purified by Protein A.

**Conjugation** Unconjugated

**Note**

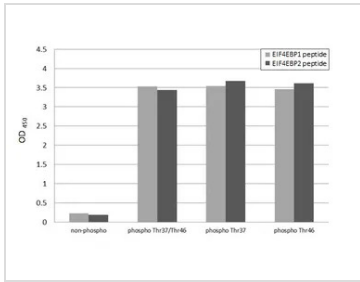
For laboratory research use only. Not for any clinical, therapeutic, or diagnostic use in humans or animals. Not for animal or human consumption.

Purchasers shall not, and agree not to enable third parties to, analyze, copy, reverse engineer or otherwise attempt to determine the structure or sequence of the product.



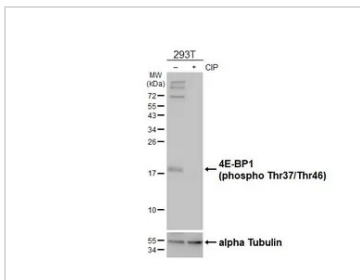
For full product information, images and publications, please visit our [website](#).

DATA IMAGES



**GTX644519 Image**

Specificity test was performed by coating the plate with recombinant EIF4EBP1 non-phospho peptide, EIF4EBP1 (phospho Thr37/Thr46) peptide, EIF4EBP1 (phospho Thr37) peptide, EIF4EBP1 (phospho Thr46) peptide, EIF4EBP2 non-phospho peptide, EIF4EBP2 (phospho Thr37/Thr46) peptide, EIF4EBP2 (phospho Thr37) peptide, and EIF4EBP2 (phospho Thr46) peptide (250 ng/mL). Coated protein was probed with 4E-BP1 (phospho Thr37/Thr46) antibody [HL4646] (GTX644519) (1 µg/mL). Goat anti-rabbit IgG antibody (HRP) (GTX213110-01) (1:10000) was used to detect the bound primary antibody.



**GTX644519 WB Image**

Untreated (-) and treated (+) 293T whole cell extracts (30 µg) were separated by 15% SDS-PAGE, and the membrane was blotted with 4E-BP1 (phospho Thr37/Thr46) antibody [HL4646] (GTX644519) diluted at 1:1000. The HRP-conjugated anti-rabbit IgG antibody (GTX213110-01) was used to detect the primary antibody.



For full product information, images and publications, please visit our [website](http://www.genetex.com).