

Ki67 antibody [GT258]

Cat. No. GTX644548

Host	Mouse
Clonality	Monoclonal
Isotype	IgG1
Applications	WB, ICC/IF
Reactivity	Human

Package
100 µl, 25 µl

Applications

Application Note

*Optimal dilutions/concentrations should be determined by the researcher.

Suggested dilution	Recommended dilution
WB	1:500-1:3000
ICC/IF	Assay dependent

Not tested in other applications.

Observed MW (kDa) > 130 kDa.

Properties

Form	Liquid
Buffer	PBS
Preservative	No preservatives
Storage	Store as concentrated solution. Centrifuge briefly prior to opening vial. For short-term storage (1-2 weeks), store at 4°C. For long-term storage, aliquot and store at -20°C or below. Avoid multiple freeze-thaw cycles.
Concentration	1 mg/ml (Please refer to the vial label for the specific concentration.)
Immunogen	Recombinant fragment of human Ki67.
Purification	Affinity purified by Protein A.
Conjugation	Unconjugated

Note

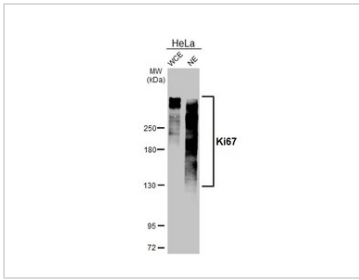
For laboratory research use only. Not for any clinical, therapeutic, or diagnostic use in humans or animals. Not for animal or human consumption.

Purchasers shall not, and agree not to enable third parties to, analyze, copy, reverse engineer or otherwise attempt to determine the structure or sequence of the product.



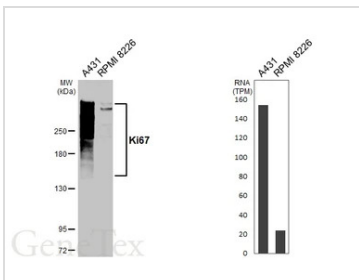
For full product information, images and publications, please visit our [website](#).

DATA IMAGES



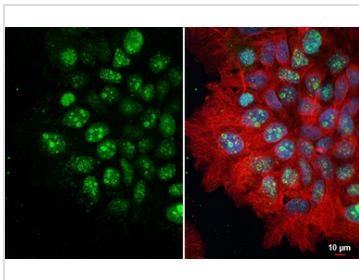
GTX644548 WB Image

HeLa whole cell and nuclear extracts (30 µg) were separated by 5% SDS-PAGE, and the membrane was blotted with Ki67 antibody [GT258] (GTX644548) diluted at 1:1000. The HRP-conjugated anti-mouse IgG antibody (GTX213111-01) was used to detect the primary antibody. (WCE: whole cell extract; NE: nuclear extract)



GTX644548 WB Image

Various whole cell extracts (30 µg) were separated by 5% SDS-PAGE, and the membrane was blotted with Ki67 antibody [GT258] (GTX644548) diluted at 1:1000. The HRP-conjugated anti-mouse IgG antibody (GTX213111-01) was used to detect the primary antibody. Corresponding RNA expression data are based on Human Protein Atlas program.



GTX644548 ICC/IF Image

Ki67 antibody [GT258] detects Ki67 protein by immunofluorescent analysis.

Sample: A431 cells were fixed in 4% paraformaldehyde at RT for 15 min.

Green: Ki67 stained by Ki67 antibody [GT258] (GTX644548) diluted at 1:500.

Red: alpha Tubulin, a cytoskeleton marker, stained by alpha Tubulin antibody [HL2162] (GTX638140) diluted at 1:500.

Blue: Fluoroshield™ with DAPI (GTX30920).



For full product information, images and publications, please visit our [website](#).