

Kv2.1 antibody [GT260]

Cat. No. GTX644550

Host	Mouse
Clonality	Monoclonal
Isotype	IgG2b
Applications	WB, IHC-P
Reactivity	Mouse, Rat

Package
100 µl, 25 µl

Applications

Application Note

*Optimal dilutions/concentrations should be determined by the researcher.

Suggested dilution	Recommended dilution
WB	1:500-1:3000
IHC-P	Assay dependent

Not tested in other applications.

Observed MW (kDa) 96-115 kDa.

Properties

Form	Liquid
Buffer	PBS
Preservative	No preservatives
Storage	Store as concentrated solution. Centrifuge briefly prior to opening vial. For short-term storage (1-2 weeks), store at 4°C. For long-term storage, aliquot and store at -20°C or below. Avoid multiple freeze-thaw cycles.
Concentration	1 mg/ml (Please refer to the vial label for the specific concentration.)
Immunogen	Synthetic peptide of rat Kv2.1.
Purification	Affinity purified by Protein A.
Conjugation	Unconjugated

Note

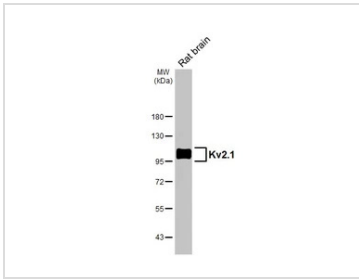
For laboratory research use only. Not for any clinical, therapeutic, or diagnostic use in humans or animals. Not for animal or human consumption.

Purchasers shall not, and agree not to enable third parties to, analyze, copy, reverse engineer or otherwise attempt to determine the structure or sequence of the product.



For full product information, images and publications, please visit our [website](#).

DATA IMAGES



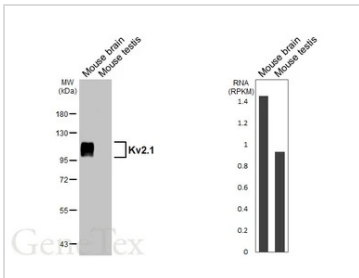
GTX644550 WB Image

Rat tissue extract (50 µg) was separated by 7.5% SDS-PAGE, and the membrane was blotted with Kv2.1 antibody [GT260] (GTX644550) diluted at 1:1000. The HRP-conjugated anti-mouse IgG antibody (GTX213111-01) was used to detect the primary antibody.



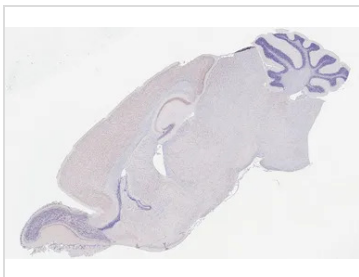
GTX644550 IHC-P Image

Kv2.1 antibody [GT260] detects Kv2.1 protein by immunohistochemical analysis.
 Sample: Paraffin-embedded mouse hippocampus.
 Kv2.1 stained by Kv2.1 antibody [GT260] (GTX644550) diluted at 1:50.
 Antigen Retrieval: Citrate buffer, pH 6.0, 15 min



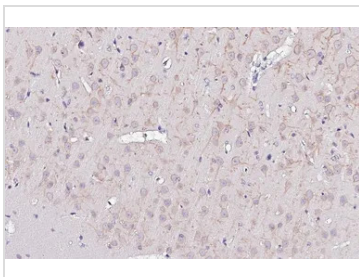
GTX644550 WB Image

Various tissue extracts (50 µg) were separated by 7.5% SDS-PAGE, and the membrane was blotted with Kv2.1 antibody [GT260] (GTX644550) diluted at 1:1000. The HRP-conjugated anti-mouse IgG antibody (GTX213111-01) was used to detect the primary antibody. Corresponding RNA expression data are based on NCBI database.



GTX644550 IHC-P Image

Kv2.1 antibody [GT260] detects Kv2.1 protein by immunohistochemical analysis.
 Sample: Paraffin-embedded mouse brain.
 Kv2.1 stained by Kv2.1 antibody [GT260] (GTX644550) diluted at 1:50.
 Antigen Retrieval: Citrate buffer, pH 6.0, 15 min



GTX644550 IHC-P Image

Kv2.1 antibody [GT260] detects Kv2.1 protein by immunohistochemical analysis.
 Sample: Paraffin-embedded rat cerebral cortex.
 Kv2.1 stained by Kv2.1 antibody [GT260] (GTX644550) diluted at 1:50.
 Antigen Retrieval: Citrate buffer, pH 6.0, 15 min



For full product information, images and publications, please visit our [website](#).